



PRODUCT GUIDE | SPRING 2019

dōTERRA®



## *Changing the world* **ONE DROP, ONE PERSON, ONE COMMUNITY AT A TIME**

### **dōTERRA®: “GIFT OF THE EARTH”**

In 2008, a group of health-care and business professionals came together with a common vision of sharing the power of high quality essential oils with the world. Each understood that essential oils, when properly sourced from optimal regions and thoroughly tested for the highest-levels of purity and potency, are the Earth’s gift to humanity. With this gift, comes great responsibility to respect the power of each element, the expertise of each grower, and the potential of each contributing community.

dōTERRA focuses on maintaining the highest levels of purity and sustainability as it partners with local growers around the world through Cō-Impact Sourcing®. This unique model implements long-term, mutually beneficial supplier partnerships where skilled rural farmers oversee plants and growing environments. In return, dōTERRA provides jobs with fair payments, leading to stronger local economies and healthier, stable supply chains.

Each dōTERRA essential oil passes through rigorous CPTG Certified Pure Tested Grade® testing guided by cutting-edge advancements in essential oil research and testing implementation. dōTERRA benefits from the ever-increasing knowledge and expertise of science experts made up of global consultants in chemistry, microbiology, botany, research science, physiology, and nutritional science.

Since its beginning, independent Wellness Advocates have shared the life-enhancing benefits of dōTERRA’s CPTG® essential oils with millions of customers throughout the world.

dōTERRA has emerged as a global integrative wellness company and the world’s largest essential oil company\*. By partnering with respected experts and world-renowned research partners, dōTERRA is revolutionizing self-care with alternative approaches to address individualized wellness.

To ensure that dōTERRA never forgets the sacredness of this gift, dōTERRA Healing Hands™ offers resources and tools to global sourcing communities and charitable organizations for self-reliance, healthcare, education, sanitation, and the fight against human trafficking.

We respectfully offer this “gift of the Earth” to you and your family.

\* Verified global market leader in the Global Aromatherapy and Essential Oils market.



**GREEN  
MANDARIN  
ESSENTIAL OIL**  
PAGE 11







**LUMO DIFFUSER**  
PAGE 38



**dōTERRA KIDS COLLECTION**  
PAGE 37



**TO ORDER:** [doterra.com/CA/en](https://doterra.com/CA/en) 1-800-411-8151

## CONTENTS

- 4 WHAT ARE ESSENTIAL OILS?  
EXTRACTIONS METHODS
- 5 CPTG CERTIFIED PURE TESTED  
GRADE
- 6 ESSENTIAL OIL USES
- 7 WHERE DO I BEGIN?
- 8 ESSENTIAL OIL SINGLES
- 17 ESSENTIAL OIL SINGLES -  
REFERENCE CHART
- 18 ESSENTIAL OIL BLENDS
- 22 ESSENTIAL OIL BLENDS -  
REFERENCE CHART
- 23 dōTERRA ESSENTIAL  
AROMATICS - REFERENCE  
CHART
- dōTERRA KIDS COLLECTION -  
REFERENCE CHART
- 24 NATURAL HEALTH PRODUCTS
- 27 NATURAL HEALTH PRODUCTS—  
REFERENCE CHART
- 28 AROMATOUGH TECHNIQUE
- 30 FAMILY ESSENTIALS
- 32 dōTERRA ESSENTIAL  
AROMATICS
- 34 dōTERRA ESSENTIAL  
AROMATICS TOUCH
- 36 dōTERRA TOUCH OIL BLENDS
- 37 dōTERRA TOUCH COLLECTION
- 38 dōTERRA HEALING HANDS
- 39 DIFFUSERS
- 40 dōTERRA KIDS COLLECTION
- 42 DEEP BLUE
- 44 ON GUARD
- 46 CORRECT-X
- FRACTIONATED COCONUT OIL
- 47 SUPPLEMENTS
- 48 ESSENTIAL SKIN CARE  
COLLECTION
- 49 HD CLEAN
- 50 VERÁGE
- 52 SALON ESSENTIALS
- 54 dōTERRA SPA

dōTERRA® proprietary Essential Wellness products are sold exclusively by Wellness Advocates through person-to-person sharing, personalized websites, and in wellness centers and spas throughout Canada and abroad. To order, talk to the Wellness Advocate who provided you with this product guide or call 1-800-411-8151 to find a Wellness Advocate in your area. Wellness Advocate distributorships are available.



## *What are* **ESSENTIAL OILS?**

Essential oils are aromatic compounds found in the seeds, bark, stems, roots, flowers, and other parts of plants. They can be both beautifully and powerfully fragrant. If you have ever enjoyed the gift of a rose, a walk by a field of lavender, or the smell of freshly cut mint, you have experienced the aromatic qualities of essential oils.

## **Extraction Methods**

Essential oils are most often extracted via a low-heat steam distillation process in which steam is circulated under pressure through plant material, liberating the essential oils into the steam. As the steam mixture cools, the water and oils are separated and the oil is collected in its pure form. To ensure the highest quality oil extract of correct chemical composition, temperature and pressure must be monitored very closely. Too little heat and pressure will not release the valuable oil; too much can fracture an extract's delicate chemical composition and alter its potency.

Equally important to the carefully controlled extraction process, the meticulous selection of correct plant species and plant parts harvested at the perfect moment when their essential oil compounds are most concentrated, is also required for a quality essential oil extract. This complex process is as much an art form as it is a science and requires experienced growers and distillers working together to ensure a superior product.





## CPTG Certified Pure Tested Grade®

dōTERRA® CPTG Certified Pure Tested Grade essential oils are pure aromatic compounds carefully extracted from plants. They do not contain fillers or artificial ingredients that would dilute their active qualities, and are free of contaminants or other chemical residues.

As important as it is to keep contaminants out of dōTERRA oils, assuring the presence of the oils' active compounds at the right levels is necessary to guarantee safety and effectiveness. Many oils claim to be therapeutic grade, and some may be pure, but few are subjected to rigorous testing standards for chemical composition. dōTERRA CPTG® essential oils are cross-tested using Mass Spectrometry and Gas Chromatography to ensure both the extract purity and composition potency of each batch.

dōTERRA works closely with a global network of leading essential oil chemists and growers to select botanicals of the correct species, grown in the ideal environments, and carefully harvested at the right time. The aromatic compounds of the plants are skillfully extracted by experienced distillers and subjected to chemical analysis to ensure purity and composition.

Equally stringent standards of safety and efficacy are applied to all dōTERRA Essential Wellness products. Guided by a Scientific Advisory Board, dōTERRA uses only top development and manufacturing partners who maintain good manufacturing practices and enjoy industry reputation for superior innovation and quality. Each dōTERRA product is guaranteed to exceed customer satisfaction and performance expectations.







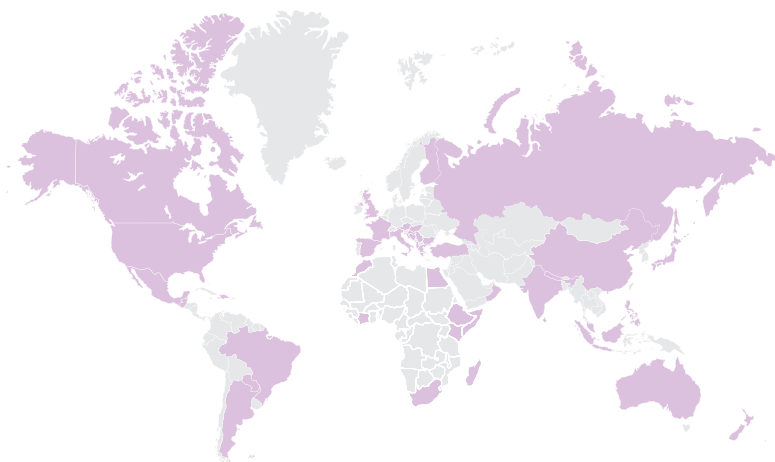
# ESSENTIAL OIL USES

Essential oils are used for a very wide range of internal and topical applications. They can be used singly or in complex blends depending on user experience and desired benefit. Essential oils are usually administered by one of three methods: diffused aromatically, applied topically to the skin, or taken internally as a flavoring to add to foods and drinks. Using essential oils can be both profoundly simple and life changing at the same time. Working with someone who has used essential oils before will help first-time users have a more beneficial and enjoyable experience.

Essential oils are powerfully concentrated and should be used with care. Be sure to use only pure, CPTG® essential oils and follow all label warnings and instructions. Essential oils should never be used in the eyes or inside the ear canal. If redness or irritation occurs when using essential oils topically, simply apply a vegetable oil such as fractionated coconut oil to the affected area — water will not dilute essential oils. Consult your physician before using essential oils if you are pregnant or under a doctor's care.

Look for the following symbols by the essential oil product descriptions in this product guide to help you with your oil selection. (Use instructions and appropriate cautions included on individual essential oil labels.)

<b>APPLICATION METHODS</b>	<b>A</b>	Can be used aromatically
	<b>T</b>	Can be used topically
	<b>I</b>	Can be used internally
<b>SKIN SENSITIVITY</b>	<b>N</b>	Can be used topically with no dilution (NEAT)
	<b>S</b>	Dilute for young or sensitive skin (SENSITIVE)
	<b>D</b>	Dilute before using topically (DILUTE)



The doTERRA® network of botanical growers and distillers spans the globe from Italy to Madagascar, India to Corsica. Only the purest and most potent essential oils meet our strict CPTG Certified Pure Tested Grade® standards. Accept nothing less from your wellness professional or for your family.

## Where do I BEGIN?

Using essential oils is intuitively simple and highly satisfying. However, the amount of oils available with their numberless combinations and wellness applications can be a bit overwhelming to beginners. As a simple first step on your journey with essential oils, we recommend a trio of Lavender, Lemon, and Peppermint. As three of our most popular oils, they will provide you and your family a compelling experience with the life-enhancing properties of CPTG® oils.



### INTRODUCTION TO ESSENTIAL OILS COLLECTION

Perfect for beginners, the Introduction to Essential Oils Collection is everything you need to get started experiencing immediately the life-changing benefits of dōTERRA® essential oils. The collection includes:

- **Lavender** essential oil
- **Lemon** essential oil
- **Peppermint** essential oil

<b>60203914</b>	Three 5 mL bottles
\$36.00 retail	\$27.00 wholesale   17 PV



### LAVENDER *Lavandula angustifolia*

#### COSMETIC USES:

- Apply one drop to moisturizer to soothe dry skin
- Add to shampoo to help keep hair looking thick and healthy
- Combine with Fractionated Coconut Oil and apply for a cooling effect
- Apply to bottom of feet before bedtime for a relaxing scent that promotes a peaceful sleep

#### FOOD USES:

- Combine with Lemon and honey in warm water for a relaxing tea

#### HOUSEHOLD USES:

- Diffuse Lavender before bedtime for a relaxing aroma
- Freshen linen closet, mattress, or air with a light mist of Lavender combined with water in a spray bottle

### LEMON *Citrus limon*

#### COSMETIC USES:

- Add to hand soap to help eliminate grease after working on a car or bike
- Incorporate into skincare routine to give complexion a refreshed, healthy-looking glow
- Combine with baking soda and coconut oil, rub on teeth for two minutes, and rinse for a brightening effect

#### FOOD USES:

- Add two drops to water for a thirst-quenching flavor
- Use in favorite dessert recipes for a refreshing citrus flavor

#### HOUSEHOLD USES:

- Place a few drops of Lemon on a rag to help remove stubborn, sticky residue
- Add to a spray bottle of water to clean tables, counter tops, and other surfaces

### PEPPERMINT *Mentha piperita*

#### COSMETIC USES:

- Massage into neck and shoulders for a refreshing aroma
- Add to shampoo or conditioner for a stimulating hair massage
- Add to cold water compress or foot bath to cool off when overheated
- Dilute with Fractionated Coconut Oil and apply after exercise for a refreshing feeling

#### FOOD USES:

- Add one or two drops to a favorite smoothie recipe for a refreshing twist

#### HOUSEHOLD USES:

- Place Peppermint in a spray bottle and spritz around windows and doors
- Diffuse five drops Peppermint oil for an energizing aroma

# ESSENTIAL OIL SINGLES

Taken from some of nature's purest sources on earth, the dōTERRA® essential oil singles aim to bring the potency and simplicity of nature straight into your home. Each dōTERRA® single oil has its own unique chemistry and aroma, giving it an exclusive set of benefits for the user. No matter your needs or your preferences, the variety of oils and their uses makes it easy to find a dōTERRA essential oil that provides nature's solution to many of your everyday problems.

## ARBORVITAE ESSENTIAL OIL

*Thuja plicata*

Known as the "tree of life" and for its exceptional preserving properties, Arborvitae essential oil acts as a powerful cleansing agent for the skin.

### COSMETIC USES:

- Add to skincare routine for its cleansing benefits
- Apply to the bottom of feet to promote a grounding and calming effect



<b>49361713</b>	5 mL bottle
\$37.67 retail	\$28.25 wholesale   23.5 PV

## BASIL ESSENTIAL OIL

*Ocimum basilicum*

A truly versatile oil, Basil is known for its soothing aroma and for providing a cooling sensation to the skin. Basil adds flavor to a variety of dishes and is a helpful addition to any essential oil collection.

### COSMETIC USES:

- Apply topically during warm weather for a cooling sensation

### FOOD USES:

- Infuse olive oil with Basil for an Italian bread dip.

### HOUSEHOLD USES:

- Diffuse for a relaxing fragrance while studying, reading, or finalizing a project



<b>30011813</b>	15 mL bottle
\$41.00 retail	\$30.75 wholesale   25.5 PV

## BERGAMOT ESSENTIAL OIL

*Citrus bergamia*

One of the most unique citrus oils, Bergamot produces a calming and uplifting aroma simultaneously, making it ideal for soothing the soul. Like other citrus oils, it possesses significant cleansing properties and a pleasant aroma.

### COSMETIC USES:

- Add one drop to a nighttime skincare routine for its skin-cleansing benefits

### FOOD USES:

- Add to desserts for a unique citrus flavor

### HOUSEHOLD USES:

- Diffuse for a relaxing aroma before bed



<b>30791813</b>	15 mL bottle
\$51.33 retail	\$38.50 wholesale   32 PV

\*See Natural Health Products (pg. 24) for the NHP version.

## BLACK PEPPER ESSENTIAL OIL

*Piper nigrum*

Most popularly known for its use in the kitchen, Black Pepper essential oil adds a burst of flavor to meals, and can be taken internally or used aromatically for a variety of benefits.

### COSMETIC USES:

- Apply to palms and inhale directly for an energizing aroma

### FOOD USES:

- Add to meats, soups, entrees, and salads to enhance food flavor



<b>41041813</b>	5 mL bottle
\$37.67 retail	\$28.25 wholesale   23.5 PV

## BLUE TANSY ESSENTIAL OIL

*Tanacetum annuum*

Blue Tansy's name is partly derived from its vivid shade of blue. Blue Tansy has a sweet, warm, calming aroma and can be beneficial to the skin, mind, and body. Blue Tansy should be diluted to minimize potential staining.

### COSMETIC USES:

- Add one drop to favorite moisturizer and apply to skin for its skin-soothing benefits

### HOUSEHOLD USES:

- Diffuse during changing seasons to create a calming environment



<b>60203634</b>	5 mL bottle
\$145.33 retail	\$109.00 wholesale   85 PV





## CARDAMOM ESSENTIAL OIL

*Elettaria cardamomum*

Often used to flavor food and beverages, Cardamom essential oil is useful in the kitchen and can also promote feelings of calm and relaxation.

### COSMETIC USES:

- Apply to chest and inhale deeply for an energizing aroma

### FOOD USES:

- Add to homemade chocolate for a unique flavor profile

### HOUSEHOLD USES:

- Diffuse for a clearing, refreshing aroma that will brighten any day



<b>49351813</b>	5 mL bottle
\$44.33 retail	\$33.25 wholesale 27.5 PV

\*See Natural Health Products (pg. 24) for the NHP version.

## CASSIA ESSENTIAL OIL

*Cinnamomum cassia*

Known as a warming oil, Cassia is a close relative of cinnamon. With a soothing and spicy scent, Cassia holds unique advantages for the body and mind.

### COSMETIC USES:

- Apply to back of neck for a calming aroma
- Combine with Fractionated Coconut Oil and massage into muscles for a warming sensation

### FOOD USES:

- Place a drop of Cassia in water to support hydration while outdoors



<b>30021813</b>	15 mL bottle
\$32.33 retail	\$24.25 wholesale 20 PV

## CEDARWOOD ESSENTIAL OIL

*Juniperus virginiana*

Cedarwood emits a warm and woody aroma that inspires feelings of wellness and vitality, and is often used during massage to relax and soothe.

### COSMETIC USES:

- Add to a warm bath to promote a relaxing environment
- Improve the appearance of skin imperfections by directly applying one drop to area



<b>49301713</b>	15 mL bottle
\$22.33 retail	\$16.75 wholesale 14 PV

## CILANTRO ESSENTIAL OIL

*Coriandrum sativum*

Applied topically, Cilantro is very soothing and cooling to the skin, and it adds a fresh, herbal aroma to any essential oil blend when diffused. Cilantro's culinary uses are endless, adding a flavorful twist to meats, salads, and dips.

### COSMETIC USES:

- Apply topically to fingernails and toenails to keep them looking clean and healthy

### FOOD USES:

- Add to dips, salsa, and guacamole for a fresh, herbal flavor



<b>41851813</b>	15 mL bottle
\$44.33 retail	\$33.25 wholesale 27.5 PV

## CINNAMON BARK ESSENTIAL OIL

*Cinnamomum zeylanicum*

Taken from fragrant tree bark, Cinnamon essential oil has noteworthy cleansing properties and a warming, spicy aroma.

### COSMETIC USES:

- Dilute with Fractionated Coconut Oil and use in a warming massage

### FOOD USES:

- Use in place of dry cinnamon in recipes for a delightfully, spicy flavor



<b>30031813</b>	5 mL bottle
\$41.00 retail	\$30.75 wholesale 25.5 PV

## CLARY SAGE ESSENTIAL OIL

*Salvia sclarea*



See page 24  
for uses and  
benefits



### PRODUCT HIGHLIGHT

## Frankincense

doTERRA® Frankincense essential oil is steam distilled from wild-crafted gum resins of the *Boswellia carterii*, *frereana*, and *sacra* trees. Highly prized in the ancient world for its fragrant and renewing properties, it is a favorite among modern wellness practitioners for its many physical applications.

## CLOVE BUD

### ESSENTIAL OIL

*Eugenia caryophyllata*

The warming and cleansing characteristics of Clove make this energizing, stimulating oil useful in massage, diffusion, and as a cooking spice.

#### COSMETIC USES:

- Dilute with Fractionated Coconut Oil and apply topically for a soothing massage
- Place one drop of Clove in two ounces of water and gargle for a fresh mouth rinse

#### FOOD USES:

- Use in place of dry clove in your baking recipes to add a spicy flavor



<b>30041813</b>	15 mL bottle
\$27.33 retail	\$20.50 wholesale   17 PV

\*See Natural Health Products (pg. 24) for the NHP version.

## CYPRESS

### ESSENTIAL OIL

*Cupressus sempervirens*



See page 24  
for uses and  
benefits

## FENNEL (SWEET)

### ESSENTIAL OIL

*Foeniculum vulgare*

Fennel has a unique licorice aroma and taste, and can be used to flavor desserts or enrich the air with its sweet smell. When applied topically, Fennel can soothe dry skin.

#### COSMETIC USES:

- Apply one to two drops topically to stomach for a soothing abdominal massage

#### FOOD USES:

- Add one drop Fennel to water or tea when craving sweets



<b>41291813</b>	15 mL bottle
\$25.67 retail	\$19.25 wholesale   16 PV

## COPAIBA

### ESSENTIAL OIL

*Copaifera reticulata, officinalis, coriacea, and langsdorffii*

Copaiba essential oil is derived from the resin of the copaiba tree. Copaiba oil is widely used in cosmetic products and perfumes and has a woody, spicy aroma.

#### COSMETIC USES:

- Massage into hands, wrists, and elbows for a soothing and moisturizing effect

#### HOUSEHOLD USES:

- Diffuse for an energizing aroma during daily activity



<b>60202899</b>	15 mL bottle
\$60.00 retail	\$45.00 wholesale   37 PV

## DOUGLAS FIR

### ESSENTIAL OIL

*Pseudotsuga menziesii*

Extracted from the branches and leaves of the Douglas Fir tree, Douglas Fir essential oil has many benefits. When used topically, Douglas Fir can improve the appearance of skin.

#### COSMETIC USES:

- Add one drop to body wash for an energizing aroma and added cleansing benefits

#### HOUSEHOLD USES:

- When creating an all-purpose cleaner, add two drops for a cleansing boost



<b>31591713</b>	5 mL bottle
\$33.33 retail	\$25.00 wholesale   20.5 PV

## FRANKINCENSE

TOP SELLER

### ESSENTIAL OIL

*Boswellia carterii, frereana, and sacra*

Because of its chemical makeup, Frankincense oil holds significant renewing properties that give it a wide variety of uses. For centuries, Frankincense has been used for its beautifying characteristics—particularly for rejuvenating the appearance of skin and promoting feelings of relaxation.

#### COSMETICS USES:

- Add two drops to moisturizer to soothe and moisturize dry skin

#### HOUSEHOLD USES:

- Diffuse Frankincense to encourage feelings of peace and satisfaction



<b>30071713</b>	15 mL bottle
\$116.33 retail	\$87.25 wholesale   67 PV

## CORIANDER

### ESSENTIAL OIL

*Coriandrum sativum*

With a fresh, herbaceous aroma, Coriander can be soothing to the mind and body, and helpful for the skin. Coriander oil is as unique as it is useful.

#### COSMETIC USES:

- Apply Coriander to legs for a soothing massage after a short workout
- Combine with Fractionated Coconut Oil and massage into skin for a soothing effect

#### FOOD USES:

- Add one drop to curry recipes for an extra boost in flavor



<b>30781813</b>	15 mL bottle
\$42.67 retail	\$32.00 wholesale   26.5 PV

## EUCALYPTUS

### ESSENTIAL OIL

*Eucalyptus radiata*

dōTERRA Eucalyptus comes from evergreen trees that grow up to 50 feet in height. The chemical structure of Eucalyptus makes it ideal for creating a soothing massage.

#### COSMETIC USES:

- Place three drops Eucalyptus in bottom of shower to invigorate senses

#### HOUSEHOLD USES:

- During winter months, diffuse Eucalyptus to promote vitality



<b>30061713</b>	15 mL bottle
\$29.00 retail	\$21.75 wholesale   18 PV

## GERANIUM

### ESSENTIAL OIL

*Pelargonium graveolens*

Long used for its beautifying properties, Geranium essential oil is extremely beneficial for improving the appearance of hair and skin. It has also been known to help create a sense of harmony in the body and mind.

#### COSMETICS USES:

- Combine one drop with shampoo to balance moisture in hair
- Use topically on the skin after a shower for a smoothing effect

#### FOOD USES:

- Add one drop of geranium oil to ice cream or frozen soy milk



<b>30091813</b>	15 mL bottle
\$53.00 retail	\$39.75 wholesale   33 PV





### GINGER ESSENTIAL OIL

*Zingiber officinale*

dōTERRA Ginger essential oil comes from the fresh rhizome of the ginger plant. When used as a kitchen spice, the earthy nature of Ginger adds flavor to a variety of dishes.

#### COSMETIC USES:

- Add one drop to warm bath water for a soothing aromatic experience

#### FOOD USES:

- Use one drop in place of whole ginger in sweet and savory recipes

A T I S

<b>31631813</b>	15 mL bottle
\$70.00 retail	\$52.50 wholesale   43.5 PV

\*See Natural Health Products (pg. 24) for the NHP version.

### GRAPEFRUIT ESSENTIAL OIL

*Citrus X paradisi*

Similar to other citrus oils, Grapefruit is known for its uplifting aroma. Grapefruit is also renowned for its cleansing properties and is frequently used in skin care to promote the appearance of healthy-looking skin.

#### COSMETIC USES:

- Add to nightly facial routine to improve the appearance of skin (avoid UV light)

#### FOOD USES:

- Use in favorite dessert recipes for a refreshing citrus flavor

#### HOUSEHOLD USES:

- Diffuse for an energizing and focusing scent

A T I N

<b>30101813</b>	15 mL bottle
\$30.67 retail	\$23.00 wholesale   19 PV

\*See Natural Health Products (pg. 24) for the NHP version.

### GREEN MANDARIN ESSENTIAL OIL

NEW!

*Citrus nobilis*

Distilled from the mandarin fruit before it has ripened, Green Mandarin essential is known for its uplifting scent and promoting healthy-looking skin.

#### COSMETIC USES:

- Add to a nightly facial routine to improve the appearance of the skin.

#### FOOD USES:

- Add two drops to four ounces of water for a fun and flavorful twist.

#### HOUSEHOLD USES:

- Combine five drops with one cup water and one cup vinegar for an effective surface cleaner.

A T I N

<b>60207636</b>	15 mL bottle
\$48.00 retail	\$36.00 wholesale   30 PV

#### APPLICATION METHODS

A Can be used aromatically T Can be used topically I Can be used internally

#### SKIN SENSITIVITY

N Can be used topically with no dilution (NEAT) S Dilute for young or sensitive skin (SENSITIVE) D Dilute before using topically (DILUTE)

## HELICHRYSUM ESSENTIAL OIL

*Helichrysum italicum*



See page 25  
for uses and  
benefits

## JUNIPER BERRY ESSENTIAL OIL

*Juniperus communis*

Derived from the coniferous tree, Juniper Berry essential oil has a rich history of traditional uses. Juniper Berry acts as a naturally-sourced cleansing agent and acts as a skin toner.

### COSMETIC USES:

- Apply one drop to the skin to promote a bright complexion

### FOOD USES:

- Add one to two drops to your next green or fruit smoothie

### HOUSEHOLD USES:

- Diffuse before bed for a calming and grounding fragrance



<b>49291813</b>	5 mL bottle
\$32.33 retail	\$24.25 wholesale   20 PV

\*See Natural Health Products (pg. 25) for the NHP version.

## LAVENDER TOP SELLER ESSENTIAL OIL

*Lavandula angustifolia*

The floral, airy scent of Lavender essential oil can produce calming, soothing, and relaxing benefits. Because it provides the user with comforting benefits, Lavender oil has seemingly limitless applications.

### COSMETIC USES:

- Add to shampoo to help keep hair looking thick and healthy
- Apply to bottom of feet before bedtime for a relaxing scent that promotes a peaceful sleep

### FOOD USES:

- Combine with Lemon and honey in warm water for a relaxing tea



<b>30111813</b>	15 mL bottle
\$39.33 retail	\$29.50 wholesale   24.5 PV

\*See Natural Health Products (pg. 25) for the NHP version.

## LEMON TOP SELLER ESSENTIAL OIL

*Citrus limon*

Renowned for its cleansing properties and invigorating aroma, Lemon is a top-selling dōTERRA favorite because of its versatility. Whether it is used as a cleaning agent in the home or to brighten a room with its stimulating aroma, Lemon essential oil holds countless benefits for any user.

### COSMETIC USES:

- Add to hand soap to help eliminate grease after working on a car or bike

### FOOD USES:

- Add two drops to water for a thirst-quenching flavor

### HOUSEHOLD USES:

- Add to a spray bottle of water to clean tables, counter tops, and other surfaces



<b>30121813</b>	15 mL bottle
\$18.67 retail	\$14.00 wholesale   11.5 PV

\*See Natural Health Products (pg. 25) for the NHP version.

## LEMONGRASS ESSENTIAL OIL

*Cymbopogon flexuosus*

Lemongrass essential oil is frequently used in skincare products for its cleansing benefits. Lemongrass has an herbaceous aroma that can heighten awareness and is ideal for massage therapy.

### COSMETIC USES:

- Combine with Fractionated Coconut Oil and apply for a soothing massage

### FOOD USES:

- Use in soups and savory dishes for a unique herbal, citrus flavor



<b>30131813</b>	15 mL bottle
\$17.00 retail	\$12.75 wholesale   10.5 PV

\*See Natural Health Products (pg. 25) for the NHP version.

## LIME ESSENTIAL OIL

*Citrus aurantifolia*

With cleansing benefits and a balancing, energizing scent, Lime essential oil can cleanse and uplift when used aromatically or topically.

### COSMETIC USES:

- Combine one drop with shampoo in hand and massage into scalp and hair for added cleansing benefits

### FOOD USES:

- Add a drop of this tangy oil to salsa, guacamole, or dips for an enhanced flavor



<b>30871813</b>	15 mL bottle
\$22.33 retail	\$16.75 wholesale   14 PV

\*See Natural Health Products (pg. 25) for the NHP version.

## MARJORAM ESSENTIAL OIL

*Origanum majorana*

Also known as “joy of the mountains,” Marjoram was known to the Greeks and Romans as a symbol of happiness. In modern applications, Marjoram is valued for its calming properties.

### COSMETIC USES:

- Apply to back of neck and shoulders for a relaxing aroma

### FOOD USES:

- Infuse in olive oil for a refreshing salad dressing, marinade, or bread dip



<b>30141813</b>	15 mL bottle
\$32.33 retail	\$24.25 wholesale   20 PV







## MELISSA

### ESSENTIAL OIL

*Melissa officinalis*

Melissa, also known as lemon balm, received its name because of its sweet, fresh, citrus-like fragrance, which was known to attract bees. A rare oil that is difficult to source and produce, Melissa holds a variety of benefits and is known for its calming fragrance.

#### COSMETIC USES:

- Add Melissa to daily moisturizer for a refreshed-looking appearance

#### FOOD USES:

- Add to herbal tea for a citrus-like flavor

#### HOUSEHOLD USES:

- Add a few drops of Melissa to a spray bottle with water and use on household surfaces



<b>30851813</b>	5 mL bottle
\$196.67 retail	\$147.50 wholesale   106 PV

## MYRRH

### ESSENTIAL OIL

*Commiphora myrrha*



See page 25  
for uses and  
benefits

## OREGANO ESSENTIAL OIL

TOP SELLER

*Origanum vulgare*

Oregano is one of the most potent and powerful essential oils and has been used for centuries for its varied benefits. In addition to being a popular cooking spice, Oregano acts as an enhancer and equalizer in essential oil blends.

#### COSMETIC USES:

- Dilute with Fractionated Coconut Oil and apply to cuticles and nailbeds to maintain healthy-looking fingernails and toenails

#### FOOD USES:

- Replace one tablespoon of dry oregano with one drop in Italian dishes



<b>30181813</b>	15 mL bottle
\$37.67 retail	\$28.25 wholesale   23.5 PV

## PATCHOULI ESSENTIAL OIL

*Pogostemon cablin*



See page 25  
for uses and  
benefits

## PEPPERMINT ESSENTIAL OIL

TOP SELLER

*Mentha piperita*



See page 25  
for uses and  
benefits

## PINK PEPPER ESSENTIAL OIL

NEW!

*Schinus molle*

The pink peppercorn is actually a fruit from the *Schinus molle* tree, a tall evergreen tree. The ancient Incans considered this tree and its small pink fruits sacred, and lined the perimeters of their temples and palaces with them. While similar in appearance to a black peppercorn, Pink Pepper is actually unrelated to true pepper.

#### COSMETIC USES:

- Combine two drops with Fractionated Coconut Oil for a soothing massage

#### FOOD USES:

- Add one to two drops to a glass of water after enjoying a large meal

#### HOUSEHOLD USES:

- Blend with citrus or floral oils to create an invigorating aroma



<b>60205308</b>	5 mL bottle
\$44.33 retail	\$33.25 wholesale   27.5 PV

## ROSEMARY ESSENTIAL OIL

*Rosmarinus officinalis*

Rosemary is an aromatic, evergreen shrub whose leaves are frequently used to flavor foods such as stuffing, pork, roast lamb, chicken, and turkey. Along with its culinary applications, Rosemary's herbaceous and energizing scent is frequently used for diffusing.

### COSMETIC USES:

- Combine Rosemary, Frankincense, and Epsom salts for a refreshing bath

### FOOD USES:

- Add one to two drops of Rosemary essential oil to meats and favorite entrees



<b>30201813</b>	15 mL bottle
\$27.33 retail	\$20.50 wholesale   17 PV



## SANDALWOOD (HAWAIIAN) ESSENTIAL OIL

*Santalum paniculatum*

Sandalwood is a name given to a class of fragrant woods that, unlike other aromatic woods, can retain their fragrance for decades. Both the wood and oil have been highly valued for centuries.

### COSMETIC USES:

- Apply two drops to a steam facial to help skin feel nourished and rejuvenated

### HOUSEHOLD USES:

- Apply to a cotton ball and place in car's AC vent for a soothing aroma while driving



<b>41861713</b>	5 mL bottle
\$119.67 retail	\$89.75 wholesale   63.5 PV

## SIBERIAN FIR ESSENTIAL OIL

*Abies sibirica*

With a scent reminiscent of Christmas trees and tranquil forests, Siberian Fir has long been recognized for producing comforting, stabilizing aromas, and stimulating the senses.

### COSMETIC USES:

- Add one to two drops to the shower floor for an energizing fragrance

### HOUSEHOLD USES:

- Add 10 drops to a spray bottle with water for a refreshing room spray



<b>60203586</b>	15 mL bottle
\$34.33 retail	\$25.75 wholesale   21.5 PV

## SPEARMINT ESSENTIAL OIL

*Mentha spicata*

Well-known for its sweet and minty flavor, Spearmint is often used in cooking, but can also be applied topically or used aromatically for a variety of powerful benefits. Spearmint is a milder alternative to other mint essential oils.

### COSMETIC USES:

- Apply to toothbrush prior to toothpaste for an extra burst of flavor and a clean feeling

### FOOD USES:

- Add one drop to hot cocoa or tea for an invigorating flavor



<b>31611813</b>	15 mL bottle
\$48.00 retail	\$36.00 wholesale   30 PV

## SPIKENARD ESSENTIAL OIL

*Nardostachys jatamansi*

Historically used for relaxation and its uplifting aroma, Spikenard essential oil has a calming fragrance and can be purifying for the skin.

### COSMETIC USES:

- Use topically on abdomen for an invigorating massage

### HOUSEHOLD USES:

- Diffuse for a calming and relaxing scent



<b>60200723</b>	5 mL bottle
\$84.67 retail	\$63.50 wholesale   52.5 PV

## TANGERINE ESSENTIAL OIL

*Citrus aurantium*

Tangerine has a long history of use in Chinese culture and herbal practices. Tangerine has a sweet, tangy aroma, similar to other citrus oils, that is uplifting and is known for its cleansing properties.

### COSMETIC USES:

- Combine one drop with ¼ cup of sea salt for a spa-like bath

### FOOD USES:

- Add two to three drops as a flavoring in dessert recipes



<b>60202904</b>	15 mL bottle
\$25.67 retail	\$19.25 wholesale   16 PV

## TEA TREE TOP SELLER ESSENTIAL OIL

*Melaleuca alternifolia*



See page 24  
for uses and  
benefits



## THYME ESSENTIAL OIL

*Thymus vulgaris*

This potent, warm, herbaceous essential oil holds cleansing benefits that are particularly helpful for cleansing the skin.

### COSMETIC USES:

- Dilute with Fractionated Coconut Oil then apply to targeted areas to clean skin

### FOOD USES:

- Add two to three drops as a flavoring in marinades



<b>30221813</b>	15 mL bottle
\$50.33 retail	\$37.75 wholesale   31 PV

## TURMERIC NEW! ESSENTIAL OIL

*Curcuma longa*

The turmeric root is a member of the ginger family with a long history of use in ancient China and India. Its unique flavor is commonly used in Indian cuisines and is actually responsible for the yellow color of curry and mustard.

### COSMETIC USES:

- Combine with moisturizer and utilize in skin care routine to support clean and healthy-looking skin

### FOOD USES:

- Use in cooking for a flavorful twist

### HOUSEHOLD USES:

- Diffuse for an uplifting and energizing aroma



<b>60207639</b>	15 mL bottle
\$48.00 retail	\$36.00 wholesale   30 PV

## VETIVER ESSENTIAL OIL

*Vetiveria zizanioides*

Derived from a thick grass, Vetiver essential oil is ideal for creating a peaceful environment as it is known to have a grounding, calming fragrance.

### HOUSEHOLD USES:

- Use as an earthy base note in a favorite DIY diffuser blend

### COSMETIC USES:

- Add two drops to a warm bath for deep relaxation



<b>30431713</b>	15 mL bottle
\$70.00 retail	\$52.50 wholesale   43.5 PV

## WILD ORANGE TOP SELLER ESSENTIAL OIL

*Citrus sinensis*

Like many other citrus oils, Wild Orange essential oil is well known for its cleansing properties. Additionally, Wild Orange has an uplifting and refreshing aroma.

### COSMETIC USES:

- Place one drop Wild Orange, Peppermint, and Frankincense in hands and inhale deeply for an energizing aroma

### FOOD USES:

- Add to water for a burst of flavor



<b>30171813</b>	15 mL bottle
\$17.00 retail	\$12.75 wholesale   10.5 PV

\*See Natural Health Products (pg. 26) for the NHP version.

## WINTERGREEN ESSENTIAL OIL

*Gaultheria fragrantissima*

Wintergreen essential oil contains soothing and renewing properties that can be received when applied to skin or diffused.

### COSMETIC USES:

- Apply to a cotton ball and add to gym bag, trashcan, or other areas to mask odor

### HOUSEHOLD USES:

- Combine with equal parts Citrus Bliss® and diffuse for an energizing aroma



<b>31621713</b>	15 mL bottle
\$37.67 retail	\$28.25 wholesale   23.5 PV







PRODUCT HIGHLIGHT

### Nepalese Wintergreen

Through the dōTERRA Co-Impact Sourcing Initiative, our new source of Wintergreen comes from Nepal where it is wild harvested by rural villagers then distilled by community owned distillation facilities. This process creates increased economic opportunity for very remote regions in rural Nepal.

### YLANG YLANG ESSENTIAL OIL

*Cananga odorata*

A sweet, floral essential oil, Ylang Ylang uses nourishing properties to benefit skin and hair, while providing a soothing aroma.

**COSMETIC USES:**

- Use in conjunction with an aromatherapy steam facial

**HOUSEHOLD USES:**

- Combine two drops Ylang Ylang, two drops Bergamot, and water in a spray bottle for a home freshener



<b>30241713</b>	15 mL bottle	
\$63.33retail	\$47.50 wholesale	39.5 PV



## ESSENTIAL OIL SINGLES

## Reference Chart

	APPLICATION			SKIN SENSITIVITY			SKU	RETAIL	WHOLESALE	PV
	AROMATIC	TOPICAL	INTERNAL	NEAT	SENSITIVE	DILUTE				
ARBORVITAE <i>Thuja plicata</i>	A	T		N			49361713	\$37.67	\$28.25	23.5
BASIL <i>Ocimum basilicum</i>	A	T	I	N			30011813	\$41.00	\$30.75	25.5
BERGAMOT <i>Citrus bergamia</i>	A	T	I		S		30791813	\$51.33	\$38.50	32
BLACK PEPPER <i>Piper nigrum</i>	A	T	I		S		41041813	\$37.67	\$28.25	23.5
BLUE TANSY <i>Tanacetum annuum</i>	A	T		N			60203634	\$145.33	\$109.00	85
CARDAMOM <i>Elettaria cardamomum</i>	A	T	I	N			49351813	\$44.33	\$33.25	27.5
CASSIA <i>Cinnamomum cassia</i>	A	T	I			D	30021813	\$32.33	\$24.25	20
CEDARWOOD <i>Juniperus virginiana</i>	A	T			S		49301713	\$22.33	\$16.75	14
CILANTRO <i>Coriandrum sativum</i>	A	T	I	N			41851813	\$44.33	\$33.25	27.5
CINNAMON BARK <i>Cinna momum zeylanicum</i>	A	T	I			D	30031813	\$41.00	\$30.75	25.5
CLOVE BUD <i>Eugenia caryophyllata</i>	A	T	I			D	30041813	\$27.33	\$20.50	17
COPAIBA <i>Copaifera reticulata, officinalis, coriacea, and langsdorffii</i>	A	T			S		60202899	\$60.00	\$45.00	37
CORIANDER <i>Coriandrum sativum</i>	A	T	I	N			30781813	\$42.67	\$32.00	26.5
DOUGLAS FIR <i>Pseudotsuga menziesii</i>	A	T		N			31591713	\$33.33	\$25.00	20.5
EUCALYPTUS <i>Eucalyptus radiata</i>	A	T			S		30061713	\$29.00	\$21.75	18
FENNEL (SWEET) <i>Foeniculum vulgare</i>	A	T	I		S		41291813	\$25.67	\$19.25	16
FRANKINCENSE <i>Olibanum and Boswellia frereana</i> <b>TOP SELLER</b>	A	T		N			30071713	\$116.33	\$87.25	67
GERANIUM <i>Pelargonium graveolens</i>	A	T	I		S		30091813	\$53.00	\$39.75	33
GINGER <i>Zingiber officinale</i>	A	T	I		S		31631813	\$70.00	\$52.50	43.5
GRAPEFRUIT <i>Citrus paradisi</i>	A	T	I	N			30101813	\$30.67	\$23.00	19
GREEN MANDARIN <i>Citrus nobilis</i> <b>NEW!</b>	A	T	I	N			60207636	\$48.00	\$36.00	30
JASMINE TOUCH <i>Jasminum grandiflorum</i>		T		N			60202907	\$71.67	\$53.75	44.5
JUNIPER BERRY <i>Juniperus communis</i>	A	T	I	N			49291813	\$32.33	\$24.25	20
LAVENDER <i>Lavandula angustifolia</i> <b>TOP SELLER</b>	A	T	I	N			30111813	\$39.33	\$29.50	24.5
LEMON <i>Citrus limon</i> <b>TOP SELLER</b>	A	T	I	N			30121813	\$18.67	\$14.00	11.5
LEMONGRASS <i>Cymbopogon flexuosus</i>	A	T	I		S		30131813	\$17.00	\$12.75	10.5
LIME <i>Citrus aurantifolia</i>	A	T	I		S		30871813	\$22.33	\$16.75	14
MAGNOLIA TOUCH <i>Michelia alba</i> <b>NEW!</b>		T		N			60207637	\$48.00	\$36.00	30
MARJORAM <i>Origanum majorana</i>	A	T	I	N			30141813	\$32.33	\$24.25	20
MELISSA <i>Melissa officinalis</i>	A	T	I	N			30851813	\$196.67	\$147.50	106
NEROLI TOUCH <i>Citrus x aurantium</i>		T		N			60202906	\$80.33	\$60.25	50
OREGANO <i>Origanum vulgare</i> <b>TOP SELLER</b>	A	T	I			D	30181813	\$37.67	\$28.25	23.5
PINK PEPPER <i>Schinus molle</i> <b>NEW!</b>	A	T	I	N			60205308	\$44.33	\$33.25	27.5
ROSE TOUCH <i>Rosa damascena</i>		T		N			60202901	\$119.67	\$89.75	69
ROSEMARY <i>Rosmarinus officinalis</i>	A	T	I	N			30201813	\$27.33	\$20.50	17
SANDALWOOD, HAWAIIAN <i>Santalum paniculatum</i>	A	T		N			41861713	\$119.67	\$89.75	63.5
SIBERIAN FIR <i>Abies sibirica</i>	A	T		N			60203586	\$34.33	\$25.75	21.5
SPEARMINT <i>Mentha spicata</i>	A	T	I		S		31611813	\$48.00	\$36.00	30
SPIKENARD <i>Nardostachys jatamansi</i>	A	T		N			60200723	\$84.67	\$63.50	52.5
TANGERINE <i>Citrus reticulata</i>	A	T	I	N			60202904	\$25.67	\$19.25	16
THYME <i>Thymus vulgaris</i>	A	T	I			D	30221813	\$50.33	\$37.75	31
TURMERIC <i>Curcuma longa</i> <b>NEW!</b>	A	T	I	N			60207639	\$48.00	\$36.00	30
VETIVER <i>Vetiveria zizanioides</i>	A	T		N			30431713	\$70.00	\$52.50	43.5
WILD ORANGE <i>Citrus sinensis</i> <b>TOP SELLER</b>	A	T	I	N			30171813	\$17.00	\$12.75	10.5
WINTERGREEN <i>Gaultheria fragrantissima</i>	A	T			S		31621713	\$37.67	\$28.25	23.5
YLANG YLANG <i>Cananga odorata</i>	A	T		N			30241713	\$63.33	\$47.50	39.5

APPLICATION METHODS

SKIN SENSITIVITY

A Can be used aromatically  
 T Can be used topically  
 I Can be used internally  
 N Can be used topically with no dilution (NEAT)  
 S Dilute for young or sensitive skin (SENSITIVE)  
 D Dilute before using topically (DILUTE)

# Proprietary ESSENTIAL OIL BLENDS

In order to further harness the power of essential oils, dōTERRA® has created a series of proprietary essential oil blends that combine several single essential oils with other ingredients to help the user achieve a more specific desired effect. Because they combine the best characteristics from several oils, dōTERRA essential oil blends are an integral part of any essential oil collection.

## AROMATOUCH® ESSENTIAL OIL BLEND

Essential oils have long been used for massage, which is why dōTERRA created a proprietary massage blend that improves various massage techniques with the help of relaxing and comforting essential oils.

### COSMETIC USES:

- Apply to neck and shoulders for a calming fragrance that promotes relaxation

### HOUSEHOLD USES:

- Diffuse to create a calm environment when meditating or relaxing



<b>31201713</b>	15 mL bottle	
\$48.00 retail	\$36.00 wholesale	30 PV

## BALANCE® ESSENTIAL OIL BLEND

The Balance® blend is a subtle combination of essential oils that promotes harmony, tranquility, and a sense of relaxation through its grounding, peaceful fragrance.

### COSMETIC USES:

- Apply to the bottom of feet for a grounding fragrance

### HOUSEHOLD USES:

- Diffuse to create a calm environment when meditating or practicing yoga



<b>31011713</b>	15 mL bottle	
\$36.00 retail	\$27.00 wholesale	22.5 PV

## CITRUS BLISS® ESSENTIAL OIL BLEND

Merging the major benefits of citrus essential oils, Citrus Bliss® Invigorating Blend holds energizing and refreshing properties that create an uplifting aroma.

### COSMETIC USES:

- Combine with Lavender and Peppermint oil and rub on back of neck

### HOUSEHOLD USES:

- Place two to three drops on dryer sheets to give laundry a refreshing aroma



<b>31021713</b>	15 mL bottle	
\$30.67 retail	\$23.00 wholesale	19 PV



### CLARYCALM® ESSENTIAL OIL BLEND

Designed specifically for women, ClaryCalm® is a proprietary blend of essential oils that have been traditionally used to promote a sense of well-being and balance.

#### COSMETIC USES:

- Add to Fractionated Coconut Oil and use in a soothing abdominal massage

#### HOUSEHOLD USES:

- Diffuse to create a calming atmosphere

A T N

<b>60201141</b>	10 mL roll-on	
\$46.33 retail	\$34.75 wholesale	28.5 PV

### DEEP BLUE® TOP SELLER ESSENTIAL OIL BLEND

Formulated to provide a cooling sensation, Deep Blue® serves as an enriching blend of oils perfect for a massage.

#### COSMETIC USES:

- Dilute Deep Blue with Fractionated Coconut Oil and massage into growing kid's legs

#### HOUSEHOLD USES:

- Diffuse for an invigorating scent during a workout

T S

<b>31051713</b>	5 mL bottle	
\$56.33 retail	\$42.25 wholesale	35 PV

<b>60201831</b>	10 mL roll-on	
\$101.00 retail	\$75.75 wholesale	58.5 PV

### EASY AIR® ESSENTIAL OIL BLEND

With a minty, fresh aroma, Easy Air® has been specially formulated to provide the user with a cooling, invigorating blend that is known for its calming aroma.

#### COSMETIC USES:

- Add three drops to shower floor for an aroma that promotes vitality

#### HOUSEHOLD USES:

- Diffuse during changing seasons for a relaxing aroma

A T S

<b>60200204</b>	15 mL bottle	
\$37.67 retail	\$28.25 wholesale	23.5 PV

### ELEVATION® ESSENTIAL OIL BLEND

This blend of uplifting essential oils has a revitalizing aroma, and is perfect for creating a stimulating atmosphere. When you need a natural pick-me-up, Elevation® is the ideal solution.

#### COSMETIC USES:

- Add to Fractionated Coconut Oil and use in a revitalizing massage
- Add a few drops to a warm bath for a soothing, uplifting experience

A T N

<b>31041713</b>	15 mL bottle	
\$73.67 retail	\$55.25 wholesale	45.5 PV

### IMMORTELLE® ESSENTIAL OIL BLEND

A proprietary blend of powerfully renewing, rare essential oils used throughout history for their beautifying benefits, Immortelle is formulated to protect and nourish dry skin while helping reduce the signs of the appearance of aging.

#### COSMETIC USES:

- Rub under arms before working out or outdoor activity
- Apply to back of neck and earlobes for a soothing fragrance

T N

<b>60205381</b>	10 mL roll-on	
\$119.00 retail	\$89.25 wholesale	74 PV







## INTUNE®

### ESSENTIAL OIL BLEND

The perfect blend for moments of study or concentration, InTune® is comprised of essential oils that promote a sense of calm and clarity.

#### COSMETIC USES:

- Apply to bottom of children's feet before school

#### HOUSEHOLD USES:

- Diffuse during study or in a classroom for an energizing aroma



<b>60201832</b>	10 mL roll-on
\$59.00 retail	\$44.25 wholesale   36.5 PV

## ON GUARD®

### ESSENTIAL OIL BLEND

The On Guard® blend has a spicy, energizing, uplifting aroma, and a chemical makeup that has cleansing properties.

#### FOOD USES

- Combine with honey and warm water to create a soothing herbal tea

#### HOUSEHOLD USES:

- Diffuse to cleanse the air and provide a sweet, spicy aroma



<b>31101813</b>	15 mL bottle
\$58.00 retail	\$43.50 wholesale   36 PV

## PASTTENSE®

### ESSENTIAL OIL BLEND

A cooling, calming blend of essential oils, PastTense is formulated to soothe both mind and body at any time with the convenient use of a roll-on bottle.

#### COSMETIC USES:

- Use topically at work or home for a relaxing aroma
- Apply to back of neck and temples for a calming fragrance before difficult situations



<b>60201161</b>	10 mL roll-on
\$33.33 retail	\$25.00 wholesale   20.5 PV

## dōTERRA PURIFY®

### ESSENTIAL OIL BLEND

With a combination of refreshing and cleansing essential oils, dōTERRA Purify is unmatched in cleansing properties and can help eradicate unwanted odors throughout the home.

#### COSMETIC USES:

- Apply topically for a cooling sensation

#### HOUSEHOLD USES:

- Apply to a cotton ball and place in car's AC vent for a refreshing aroma



<b>31061713</b>	15 mL bottle
\$34.33 retail	\$25.75 wholesale   21.5 PV

## dōTERRA SERENITY®

### ESSENTIAL OIL BLEND

dōTERRA Serenity essential oil blend soothes the soul, providing a safe haven from life's daily stressors. The calming aroma of dōTERRA Serenity is the perfect blend to diffuse at bedtime.

#### COSMETIC USES:

- Combine with Epsom salts in a warm bath for a relaxing, renewing sensation

#### HOUSEHOLD USES:

- Diffuse at night in your child's bedroom



<b>60200721</b>	15 mL bottle
\$54.67 retail	\$41.00 wholesale   34 PV

## SMART & SASSY®

### ESSENTIAL OIL BLEND

Smart & Sassy® is a proprietary blend of Grapefruit, Lemon, Peppermint, Ginger, and Cinnamon essential oils. This flavorful and aromatic blend has multiple uses.

#### COSMETIC USES:

- Massage into stomach, hips, and thighs for a smoothing, warming effect

#### FOOD USES

- Add five drops to eight ounces of water for a refreshing beverage



<b>31371813</b>	15 mL bottle
\$44.33 retail	\$33.25 wholesale   27.5 PV

### TERRASHIELD® ESSENTIAL OIL BLEND

TerraShield® contains a select blend of essential oils including Ylang Ylang, Cedarwood, Catnip, Lemon Eucalyptus, Litsea, Arbovitae, Nootka, and Vanilla Bean Absolute—all of which combined create an inviting indoor and outdoor aroma.

#### COSMETIC USES:

- Apply TerraShield topically or place on aromatherapy jewelry

#### HOUSEHOLD USES:

- Diffuse in home during summer months



<b>60201692</b>	15 mL bottle	
\$18.00 retail	\$13.50 wholesale	11 PV

### TERRASHIELD® SPRAY ESSENTIAL OIL BLEND

TerraShield® Spray comes in a convenient and easy to apply 30 mL spray bottle.

#### COSMETIC USES:

- TerraShield can be used by everyone in the family
- Apply to bare skin before the next family excursion



<b>60201693</b>	30 mL spray bottle	
\$33.33 retail	\$25.00 wholesale	18 PV

### dōTERRA WHISPER® ESSENTIAL OIL BLEND

This specialized blend for women emits a soft and musky aroma and creates an individualized fragrance when applied topically.

#### COSMETIC USES:

- Place on terra-cotta jewelry for a long-lasting scent that promotes relaxation

#### HOUSEHOLD USES:

- Diffuse in the evening for a warming aroma



<b>31081713</b>	5 mL bottle	
\$41.00 retail	\$30.75 wholesale	25.5 PV

### ZENDOCRINE® ESSENTIAL OIL BLEND

Zendocrine® is a proprietary blend that combines the cleansing benefits of Tangerine, Geranium, and Cilantro with the calming properties of Rosemary and Juniper Berry.

#### COSMETIC USES:

- Apply topically to stomach for a soothing massage

#### FOOD USES

- Combine with honey and warm water to create a soothing herbal tea



<b>31461813</b>	15 mL bottle	
\$41.00 retail	\$30.75 wholesale	25.5 PV

### ZENGEST® TOP SELLER ESSENTIAL OIL BLEND

This unique blend combines the calming properties of Ginger, Fennel, Coriander, Peppermint, Tarragon, Anise, and Caraway. ZenGest® can be diffused for its licorice aroma, can be applied topically to the abdomen, or taken internally for its soothing properties.

#### COSMETIC USES:

- Use topically before a long flight or road trip for a calming aroma

#### FOOD USES

- Add one drop to water after enjoying a large meal



<b>31031813</b>	15 mL bottle	
\$56.33 retail	\$42.25 wholesale	35 PV



## ESSENTIAL OIL BLENDS

### Reference Chart

	APPLICATION			SKIN SENSITIVITY			SKU	RETAIL	WHOLESALE	PV
	AROMATIC	TOPICAL	INTERNAL	NEAT	SENSITIVE	DILUTE				
<b>AROMATOUCH® Essential Oil Blend</b>	A	T		N			31201713	\$48.00	\$36.00	30
<i>Cypress, Marjoram, Peppermint, Basil, Grapefruit, Lavender</i>										
<b>BALANCE® Essential Oil Blend</b>	A	T		N			31011713	\$36.00	\$27.00	22.5
<i>Spruce, Ho Wood, Frankincense, Blue Tansy, Blue Chamomile in a base of Fractionated Coconut Oil</i>										
<b>CITRUS BLISS® Essential Oil Blend</b>	A	T		N			31021713	\$30.67	\$23.00	19
<i>Wild Orange, Lemon, Grapefruit, Mandarin, Bergamot, Tangerine, Clementine, with Vanilla Absolute</i>										
<b>CLARYCALM® Essential Oil Blend</b>	A	T		N			60201141	\$46.33	\$34.75	28.5
<i>Clary Sage, Lavender, Bergamot, Roman Chamomile, Cedarwood, Ylang Ylang, Geranium, Fennel, Carrot Seed, Palmarosa, Vitex</i>										
<b>DEEP BLUE® Essential Oil Blend</b> <b>TOP SELLER</b>		T			S		31051713	\$56.33	\$42.25	35
<i>Wintergreen, Camphor, Peppermint, Blue Tansy, Ylang Ylang, German Chamomile, Helichrysum, Osmanthus</i>										
<b>EASY AIR® Essential Oil Blend</b>	A	T			S		60200204	\$37.67	\$28.25	23.5
<i>Laurel Leaf, Peppermint, Eucalyptus, Ravensara, Melaleuca, Lemon, Cardamom, Ravensara</i>										
<b>ELEVATION® Essential Oil Blend</b>	A	T		N			31041713	\$73.67	\$55.25	45.5
<i>Lavandin, Lavender, Tangerine, Elemi, Lemon Myrtle, Melissa, Ylang Ylang, Osmanthus, Hawaiian Sandalwood</i>										
<b>HD CLEAN® Essential Oil Blend</b>		T		N			60201145	\$36.00	\$27.00	22.5
<i>Black Cumin Seed Oil, Ho Wood, Melaleuca, Eucalyptus, Geranium, Litsea</i>										
<b>IMMORTELLE® Essential Oil Blend</b>		T		N			60205381	\$119.00	\$89.25	74
<i>Frankincense, Hawaiian Sandalwood, Lavender, Myrrh, Helichrysum, Rose</i>										
<b>INTUNE® Essential Oil Blend</b>		T		N			60201832	\$59.00	\$44.25	36.5
<i>Amyris, Patchouli, Frankincense, Lime, Ylang Ylang, Hawaiian Sandalwood, Roman Chamomile</i>										
<b>ON GUARD® Essential Oil Blend</b> <b>TOP SELLER</b>	A	T	I		S		31101813	\$58.00	\$43.50	36
<i>Wild Orange, Clove, Cinnamon, Eucalyptus, Rosemary</i>										
<b>PASTTENSE® Essential Oil Blend</b>		T		N			60201161	\$33.33	\$25.00	20.5
<i>Wintergreen, Lavender, Peppermint, Frankincense, Cilantro, Marjoram, Roman Chamomile, Basil, Rosemary</i>										
<b>dōTERRA PURIFY® Essential Oil Blend</b>	A	T		N			31061713	\$34.33	\$25.75	21.5
<i>Lemon, Lime, Siberian Fir, Austrian Fir, Citronella, Melaleuca, Cilantro</i>										
<b>dōTERRA SERENITY® Essential Oil Blend</b>	A	T		N			60200721	\$54.67	\$41.00	34
<i>Lavender, Sweet Marjoram, Roman Chamomile, Ylang Ylang, Hawaiian Sandalwood, Vanilla Absolute</i>										
<b>SMART &amp; SASSY® Essential Oil Blend</b> <b>TOP SELLER</b>	A	T	I		S		31371813	\$44.33	\$33.25	27.5
<i>Grapefruit, Lemon, Peppermint, Ginger, Cinnamon</i>										
<b>TERRASHIELD® Essential Oil Blend</b> <b>TOP SELLER</b>	A	T		N			60201692	\$18.00	\$13.50	11
<i>Ylang Ylang, Cedarwood, Catnip, Lemon Eucalyptus, Litsea, Arborvitae, Nootka, Vanilla Bean Absolute</i>										
<b>dōTERRA WHISPER® Essential Oil Blend</b>	A	T		N			31081713	\$41.00	\$30.75	25.5
<i>Bergamot, Ylang Ylang, Patchouli, Cinnamon, Labdanum, Vetiver, Hawaiian Sandalwood, Rose, and Vanilla, Jasmine, and Cocoa Absolutes in a base of Fractionated Coconut Oil</i>										
<b>ZENDOCRINE® Essential Oil Blend</b>	A	T	I	N			31461813	\$41.00	\$30.75	25.5
<i>Tangerine, Rosemary, Geranium, Juniper Berry, Cilantro</i>										
<b>ZENGEST® Essential Oil Blend</b> <b>TOP SELLER</b>	A	T	I	N			31031813	\$56.33	\$42.25	35
<i>Ginger, Peppermint, Tarragon, Fennel, Caraway, Coriander, Anise</i>										



# ESSENTIAL OIL BLENDS

## Reference Chart

	APPLICATION			SKIN SENSITIVITY			SKU	RETAIL	WHOLESALE	PV
	AROMATIC	TOPICAL	INTERNAL	NEAT	SENSITIVE	DILUTE				
<b>dōTERRA® ESSENTIAL AROMATICS</b>										
<b>dōTERRA MOTIVATE®</b> <i>Encouraging Blend</i>	A	T			S		31741713	\$39.33	\$29.50	24.5
<i>Peppermint, Clementine, Coriander, Basil, Yuzu, Melissa, Rosemary, Vanilla Absolute</i>										
<b>dōTERRA CHEER®</b> <i>Uplifting Blend</i>	A	T			S		31721713	\$42.67	\$32.00	26.5
<i>Wild Orange, Clove, Star Anise, Lemon Myrtle, Nutmeg, Vanilla Absolute, Ginger, Cinnamon Bark, Zdravetz</i>										
<b>dōTERRA PASSION®</b> <i>Inspiring Blend</i>	A	T			S		31761713	\$71.67	\$53.75	44.5
<i>Fractionated Coconut Oil, Cardamom, Cinnamon Bark, Ginger, Clove, Sandalwood, Jasmine Absolute, Vanilla Absolute, Damiana</i>										
<b>dōTERRA FORGIVE®</b> <i>Renewing Blend</i>	A	T			S		31751713	\$34.33	\$25.75	21.5
<i>Spruce, Bergamot, Juniper Berry, Lemon, Myrrh, Arborvitae, Nootka Tree, Thyme, Citronella</i>										
<b>dōTERRA CONSOLE®</b> <i>Comforting Blend</i>	A	T		N			31731713	\$63.33	\$47.50	39.5
<i>Frankincense, Patchouli, Ylang Ylang, Labdanum Absolute, Amyris, Sandalwood, Rose, Osmanthus Extract</i>										
<b>dōTERRA PEACE®</b> <i>Reassuring Blend</i>	A	T		N			31711713	\$51.33	\$38.50	32
<i>Vetiver, Lavender, Ylang Ylang, Frankincense, Clary Sage, Marjoram, Labdanum Absolute, Spearmint</i>										

## dōTERRA® KIDS COLLECTION NEW!

<b>THINKER</b> <i>Focus Blend</i> <span>NEW!</span>	A	T		N			60207645	\$27.33	\$20.50	17
<i>Fractionated Coconut Oil, Vetiver, Clementine, Peppermint, Rosemary</i>										
<b>CALMER</b> <i>Restful Blend</i> <span>NEW!</span>	A	T		N			60207640	\$32.33	\$24.25	20
<i>Fractionated Coconut Oil, Lavender, Cananga, Buddha Wood, Roman Chamomile</i>										
<b>STRONGER</b> <i>Protective Blend</i> <span>NEW!</span>	A	T		N			60207644	\$24.00	\$18.00	15
<i>Fractionated Coconut Oil, Cedarwood, Litsea, Frankincense, Rose Extract</i>										
<b>RESCUER</b> <i>Soothing Blend</i> <span>NEW!</span>	A	T		N			60207642	\$25.67	\$19.25	16
<i>Fractionated Coconut Oil, Lavender, Spearmint, Copaiba, Zanthoxylum</i>										
<b>STEADY</b> <i>Grounding Blend</i> <span>NEW!</span>	A	T		N			60207643	\$25.67	\$19.25	16
<i>Fractionated Coconut Oil, Amyris, Balsam Fir, Coriander, Magnolia</i>										
<b>BRAVE</b> <i>Courage Blend</i> <span>NEW!</span>	A	T		N			60207641	\$36.00	\$27.00	22.5
<i>Fractionated Coconut Oil, Wild Orange, Amyris, Osmanthus Extract, Cinnamon</i>										

**APPLICATION METHODS** A Can be used aromatically T Can be used topically I Can be used internally

**SKIN SENSITIVITY** N Can be used topically with no dilution (NEAT) S Dilute for young or sensitive skin (SENSITIVE) D Dilute before using topically (DILUTE)

# NATURAL HEALTH PRODUCTS

dōTERRA offers the following selection of essential oils as Natural Health Products (NHP), a category regulated by Health Canada. These are naturally occurring substances that are used to restore or maintain good health. These products are identified with a Natural Product Number (NPN) on the label, showing that the product may be sold as an NHP in Canada and is safe and effective when used according to the instructions on the label. **Follow the directions on the label for safe use.**

## BERGAMOT ESSENTIAL OIL

*Citrus bergamia*

Bergamot is the most delicate of the citrus plants, requiring special climate and soil in order to thrive. Bergamot is versatile in its ability to address a myriad of well-being concerns and is relieving to the skin.

### NATURAL HEALTH PRODUCT USES:

- Used in aromatherapy for symptomatic relief of eczema and dermatitis
- Used in aromatherapy as a carminative and antispasmodic for symptomatic relief of digestive discomfort

<b>30792113</b>	15 mL bottle	NPN80060980
\$51.33 retail	\$38.50 wholesale	32 PV

## CARDAMOM ESSENTIAL OIL

*Elettaria cardamomum*

A close relative to Ginger, Cardamom is known for being beneficial to the digestive system. Cardamom also has an effect on the respiratory system making it an ideal oil to help relieve colds and cough.

### NATURAL HEALTH PRODUCT USES:

- Used in aromatherapy to help relieve colds and cough
- Used in aromatherapy as a carminative and antispasmodic for symptomatic relief of digestive discomfort

<b>49352113</b>	5 mL bottle	NPN80060953
\$44.33 retail	\$33.25 wholesale	27.5 PV

## CLARY SAGE ESSENTIAL OIL

*Salvia sclarea*

Clary Sage is a biennial or perennial herb that grows up to six feet in height. Known for its calmative properties and benefits to the skin, Clary Sage is also ideal for helping to relieve joint and muscle pain associated with rheumatoid arthritis.

### NATURAL HEALTH PRODUCT USES:

- Used in aromatherapy as a nervine and calmative
- Used in aromatherapy to help relieve joint and muscle pain associated with sprain, strain, and rheumatoid arthritis

<b>30422113</b>	15 mL bottle	NPN80060984
\$62.33 retail	\$46.75 wholesale	38.5 PV

## CLOVE BUD ESSENTIAL OIL

*Syzygium aromaticum*

Clove Bud essential oil is versatile and can address multiple concerns. It is an essential oil that produces a warm, woody aroma.

### NATURAL HEALTH PRODUCT USES:

- Used in aromatherapy to help relieve joint/ muscle pain associated with sprains, strains and rheumatoid arthritis
- Used in aromatherapy to help relieve colds and coughs

<b>60201514</b>	15 mL bottle	NPN80073542
\$27.33 retail	\$20.50 wholesale	17 PV

## CYPRESS ESSENTIAL OIL

*Cupressus sempervirens*

Derived from the branches of the tall evergreen tree, Cypress essential oil has a fresh, clean aroma and when applied topically can help relieve joint and muscle pain associated with sprains and strains.

### NATURAL HEALTH PRODUCT USES:

- Used in aromatherapy to help relieve colds and cough
- Used in aromatherapy to help relieve joint and muscle pain associated with sprain, strain, and rheumatoid arthritis

<b>30052113</b>	15 mL bottle	NPN80060929
\$26.67 retail	\$20.00 wholesale	16.5 PV

## GINGER ESSENTIAL OIL

*Zingiber officinale*

Ginger's stimulating aroma is used in aromatherapy. Sourced from Madagascar, dōTERRA® Ginger essential oil is derived from the fresh rhizome of the ginger plant—the subterranean stalk of a plant that shoots out the root system.

### NATURAL HEALTH PRODUCT USES:

- Used in aromatherapy as a carminative or antispasmodic for symptomatic relief of digestive discomfort
- Used in aromatherapy to help relieve colds and cough

<b>31632113</b>	15 mL bottle	NPN80060954
\$70.00 retail	\$52.50 wholesale	43.5 PV

## GRAPEFRUIT ESSENTIAL OIL

*Citrus paradisi*

The name "grapefruit" is attributed to the fruit growing in clusters, which resemble those of grapes. Known for its calming aroma, Grapefruit can help uplift the mood.

### NATURAL HEALTH PRODUCT USES:

- Used in aromatherapy as a nervine and calmative

<b>30102113</b>	15 mL bottle	NPN80060966
\$30.67 retail	\$23.00 wholesale	19 PV



## HELICHRYSUM ESSENTIAL OIL

*Helichrysum italicum*

Helichrysum is a small perennial herb with narrow, silver leaves and flowers that form a cluster of golden yellow, ball-shaped blossoms. Helichrysum has been used in herbal health practices since ancient Greece and the oil is highly valued and sought after for its many health benefits.

### NATURAL HEALTH PRODUCT USES:

- Used in aromatherapy to help relieve colds and cough
- Used in aromatherapy for symptomatic relief of eczema and dermatitis

<b>30412113</b>	5 mL bottle	NPN80060963
\$119.67 retail	\$89.75 wholesale	63.5 PV

## LEMON TOP SELLER ESSENTIAL OIL

*Citrus limon*

The cleansing, purifying, and invigorating properties of Lemon that make it ideal to help relieve colds and coughs. It is one of the most versatile oils, not to mention the top-selling essential oil that dōTERRA offers.

### NATURAL HEALTH PRODUCT USES:

- Used in aromatherapy to help relieve colds and cough

<b>30122113</b>	15 mL bottle	NPN80060961
\$18.67 retail	\$14.00 wholesale	11.5 PV

## MYRRH ESSENTIAL OIL

*Commiphora myrrha*

Ancient records show that Myrrh was deemed so valuable that at times it was valued at its weight in gold. Myrrh essential oil is derived from the gummy resin of the small, thorny Myrrh tree and is soothing to the skin.

### NATURAL HEALTH PRODUCT USES:

- Used in aromatherapy to help relieve colds and cough
- Used in aromatherapy to relieve minor skin irritation, cuts, bruises and burns

<b>30162113</b>	15 mL bottle	NPN80060962
\$101.00 retail	\$75.75 wholesale	53 PV

## JUNIPER BERRY ESSENTIAL OIL

*Juniperus communis*

Derived from the coniferous tree, Juniper Berry essential oil has a rich history of traditional uses and benefits. Juniper Berry acts as a natural cleansing and calming agent for the skin.

### NATURAL HEALTH PRODUCT USES:

- Used in aromatherapy for symptomatic relief of acne and boils
- Used in aromatherapy to relieve minor skin irritation, cuts, bruises, and burns

<b>49292113</b>	5 mL bottle	NPN80060933
\$32.33 retail	\$24.25 wholesale	20 PV

## LEMONGRASS ESSENTIAL OIL

*Cymbopogon flexuosus*

A tall, perennial plant, Lemongrass essential oil promotes healthy digestion and is an ideal oil to use in massage therapy for its ability to help relieve joint and muscle pain.

### NATURAL HEALTH PRODUCT USES:

- Used in aromatherapy as a carminative and antispasmodic for symptomatic relief of digestive discomfort
- Used in aromatherapy to help relieve joint and muscle pain associated with sprain, strain, and rheumatoid arthritis

<b>60202173</b>	15 mL bottle	NPN80073544
\$17.00 retail	\$12.75 wholesale	10.5 PV

## PATCHOULI ESSENTIAL OIL

*Pogostemon cablin*

A member of the mint family, Patchouli is known to help with skin imperfections, while also providing symptomatic relief of digestive discomfort.

### NATURAL HEALTH PRODUCT USES:

- Used in aromatherapy as a nervine and calmative
- Used in aromatherapy to relieve minor skin irritation, cuts, bruises, and burns

<b>30892113</b>	15 mL bottle	NPN80060989
\$48.00 retail	\$36.00 wholesale	30 PV

## LAVENDER TOP SELLER ESSENTIAL OIL

*Lavandula angustifolia*

Lavender is often considered a must-have oil to keep on hand at all times due to its versatile uses, including calming properties.

### NATURAL HEALTH PRODUCT USES:

- Used in aromatherapy to help relieve headaches
- Used in aromatherapy as a nervine and calmative

<b>30112113</b>	15 mL bottle	NPN80061038
\$39.33 retail	\$29.50 wholesale	24.5 PV

## LIME ESSENTIAL OIL

*Citrus aurantifolia*

Cold-pressed from the peel of fresh limes, Lime is frequently used in body cleansers for its purifying properties and can be used for symptomatic relief of acne and boils.

### NATURAL HEALTH PRODUCT USES:

- Used in aromatherapy to help relieve colds and cough
- Used in aromatherapy for symptomatic relief of acne and boils

<b>30872113</b>	15 mL bottle	NPN80060938
\$22.33 retail	\$16.75 wholesale	14 PV

## PEPPERMINT TOP SELLER ESSENTIAL OIL

*Mentha x piperita*

Consistently one of dōTERRA's best sellers, Peppermint oil has a wide range of benefits from freshening breath to its energizing aroma. Peppermint essential oil is always useful to have on hand.

### NATURAL HEALTH PRODUCT USES:

- Used in aromatherapy as a carminative and antispasmodic to relieve symptoms of digestive discomfort
- Traditionally used in herbal medicine to help relieve nausea and vomiting

<b>30192113</b>	15 mL bottle	NPN80061370
\$37.67 retail	\$28.25 wholesale	23.5 PV



**PEPPERMINT BEADLET**

Experience a refreshing, invigorating burst of Peppermint in the convenience of a dissolving beadlet.

**NATURAL HEALTH PRODUCT USES:**

- Used in aromatherapy as a carminative and antispasmodic to relieve symptoms of digestive discomfort
- Traditionally used in herbal medicine to help relieve nausea and vomiting

<b>31571813</b>	125 beadlets	NPN80078395
\$21.33 retail	\$16.00 wholesale	13 PV

**PETITGRAIN ESSENTIAL OIL**

*Citrus aurantium*

Petitgrain has a fresh, slightly herbaceous aroma and a variety of uses.

**NATURAL HEALTH PRODUCT USES:**

- Used in aromatherapy as a nervine/calmativ
- Used in aromatherapy to help relieve joint/muscle pain associated with sprain/strain/rheumatoid arthritis

<b>60200722</b>	15 mL bottle	NPN80072499
\$42.67 retail	\$32.00 wholesale	26.5 PV

**ROMAN CHAMOMILE ESSENTIAL OIL**

*Anthemis nobilis*

Roman Chamomile grows close to the ground, reaching only up to a foot in height. It has gray-green leaves, flowers that resemble a daisy, and smells like apple. While the most common use of chamomile is in teas, Roman Chamomile can also be found in face creams, hair dyes, shampoos, and perfumes.

**NATURAL HEALTH PRODUCT USES:**

- Used in aromatherapy as a nervine/calmativ
- Used in aromatherapy as a carminative/antispasmodic for symptomatic relief of digestive discomfort

<b>60200810</b>	5 mL bottle	NPN80072461
\$77.00 retail	\$57.75 wholesale	47.5 PV

**SANDALWOOD (INDIAN) ESSENTIAL OIL**

*Santalum album*

The sweet, woody aroma of Sandalwood is a reflection of the soothing benefits of the essential oil—which can be used to help relieve headaches, colds, coughs, and digestive discomfort.

**NATURAL HEALTH PRODUCT USES:**

- Used in aromatherapy as a nervine and calmativ
- Used in aromatherapy to help relieve colds and cough

<b>30212113</b>	5 mL bottle	NPN80060977
\$119.67 retail	\$89.75 wholesale	63.5 PV

**TEA TREE ESSENTIAL OIL**

TOP SELLER

*Melaleuca alternifolia*

The leaves of the Melaleuca tree were used by the Aborigines of Australia for centuries. They would crush the leaves and inhale the oil to promote feelings of clear breathing. This makes Tea Tree used in aromatherapy ideal to help relieve colds.

**NATURAL HEALTH PRODUCT USES:**

- Used in aromatherapy to help relieve colds and cough

<b>30152113</b>	15 mL bottle	NPN80060950
\$36.00 retail	\$27.00 wholesale	22.5 PV

**WILD ORANGE ESSENTIAL OIL**

TOP SELLER

*Citrus sinensis*

Cold pressed from the peel, Wild Orange is one of doTERRA's top-selling essential oils due to its calming aroma and health benefits.

**NATURAL HEALTH PRODUCT USES:**

- Used in aromatherapy as a nervine and calmativ
- Used in aromatherapy as a carminative and antispasmodic for symptomatic relief of digestive discomfort

<b>30172113</b>	15 mL bottle	NPN80060970
\$17.00 retail	\$12.75 wholesale	10.5 PV





## NHP SINGLE ESSENTIAL OILS

### Reference Chart

	SKU	RETAIL	WHOLESALE	PV
BERGAMOT <i>Citrus bergamia</i>	30792113	\$51.33	\$38.50	32
CARDAMOM <i>Elettaria cardamomum</i>	49352113	\$44.33	\$33.25	27.5
CLARY SAGE <i>Salvia sclarea</i>	30422113	\$62.33	\$46.75	38.5
CLOVE BUD <i>Syzygium aromaticum</i>	60201514	\$27.33	\$20.50	17
CYPRESS <i>Cupressus sempervirens</i>	30052113	\$26.67	\$20.00	16.5
GINGER <i>Zingiber officinale</i>	31632113	\$70.00	\$52.50	43.5
GRAPEFRUIT <i>Citrus paradisi</i>	30102113	\$30.67	\$23.00	19
HELICHRYSUM <i>Helichrysum italicum</i>	30412113	\$119.67	\$89.75	63.5
JUNIPER BERRY <i>Juniperus communis</i>	49292113	\$32.33	\$24.25	20
LAVENDER <i>Lavandula angustifolia</i> <b>TOP SELLER</b>	30112113	\$39.33	\$29.50	24.5
LEMON <i>Citrus limon</i> <b>TOP SELLER</b>	30122113	\$18.67	\$14.00	11.5
LEMONGRASS <i>Cymbopogon flexuosus</i>	60202173	\$17.00	\$12.75	10.5
LIME <i>Citrus aurantifolia</i>	30872113	\$22.33	\$16.75	14
MYRRH <i>Commiphora myrrha</i>	30162113	\$101.00	\$75.75	53
PATCHOULI <i>Pogostemon cablin</i>	30892113	\$48.00	\$36.00	30
PEPPERMINT <i>Mentha x piperita</i> <b>TOP SELLER</b>	30192113	\$37.67	\$28.25	23.5
PEPPERMINT BEADLET <b>TOP SELLER</b>	31571813	\$21.33	\$16.00	13
PETITGRAIN <i>Citrus aurantium</i>	60200722	\$42.67	\$32.00	26.5
ROMAN CHAMOMILE <i>Anthemis nobilis</i>	60200810	\$77.00	\$57.75	47.5
SANDALWOOD <i>Santalum album</i>	30212113	\$119.67	\$89.75	63.5
TEA TREE <i>Melaleuca alternifolia</i> <b>TOP SELLER</b>	30152113	\$36.00	\$27.00	22.5
WILD ORANGE <i>Citrus sinensis</i> <b>TOP SELLER</b>	30172113	\$17.00	\$12.75	10.5





# aromatouch<sup>®</sup> TECHNIQUE

STEP 1



STEP 2



STEP 3



STEP 4





### AROMATOUCH® TECHNIQUE COLLECTION

Increase the benefits you experience with essential oils by incorporating the Aromatouch® Technique into your healthy lifestyle philosophy.

<b>60203910</b>	Eight 5 mL bottles
\$175.00 retail	\$131.25 wholesale   108.5 PV

The dōTERRA Aromatouch® Technique is a simple step-by-step method of applying essential oils topically to produce a profound overall wellness experience.

The Aromatouch® Technique Collection includes **EIGHT** 5 mL bottles of Balance®, Lavender, Tea Tree, On Guard®, Aromatouch®, Deep Blue®, Wild Orange, Peppermint, and a 115 mL bottle of Fractionated Coconut Oil. The collection also includes an overview booklet in a beautiful presentation box.

Equally compelling to novice users and licensed professionals, the Aromatouch® Technique represents an exciting new era of essential oil application and benefits.



*"I love doing the Aromatouch Technique on moms and dads so they can learn how to do the same for their families. It is a win-win situation."*

Peggy S., Utah, USA



# dōTERRA® | FAMILY ESSENTIALS



The dōTERRA Family Essentials contains **TEN** essential oils and blends — the essentials that parents can use on a daily basis for their families.

**FAMILY ESSENTIALS** **TOP SELLER**

**Essential Oils Singles:**

- Frankincense
- Lavender
- Lemon
- Oregano
- Peppermint
- Tea Tree

**Essential Oils Blends:**

- Deep Blue®
- Easy Air®
- On Guard®
- ZenGest®

<b>60204086</b>	Ten 5 mL bottles
\$219.00 retail	\$164.25 wholesale   125 PV



## FRANKINCENSE ESSENTIAL OIL

Frankincense is one of the most prized and precious oils. The ancient Egyptians used Frankincense resin for everything from perfume to skincare. This centuries-old knowledge contributes to the modern uses of Frankincense today. Its soothing and beautifying properties are used to rejuvenate skin and reduce the appearance of skin imperfections.

### COSMETIC USES:

- Helps promote youthful, radiant-looking skin and slows the signs of aging by reducing the appearance of skin imperfections
- Dry weather can take a toll on your nails. Try applying a drop of Frankincense to improve the appearance of fingernails

A T N



## LAVENDER ESSENTIAL OIL

### COSMETIC USES:

- Add to shampoo to help keep hair looking thick and healthy
- Apply to bottom of feet before bedtime for a relaxing scent that promotes a peaceful sleep

### FOOD USES:

- Combine with Lemon and honey in warm water for a relaxing tea

A T I N



## LEMON ESSENTIAL OIL

### COSMETIC USES:

- Add to hand soap to help eliminate grease after working on a car or bike

### FOOD USES:

- Use in favorite dessert recipes for a refreshing citrus flavor

### HOUSEHOLD USES:

- Add to a spray bottle of water to clean tables, counter tops, and other surfaces

A T I N



## PEPPERMINT ESSENTIAL OIL

### COSMETIC USES:

- Add to daily facial routine to promote a glowing, youthful complexion

### FOOD USES:

- Add one or two drops to a favorite smoothie recipe for a refreshing twist

### HOUSEHOLD USES:

- Diffuse for an energizing aroma that helps reduce feelings of mental fatigue

A T I S



## TEA TREE ESSENTIAL OIL

### COSMETIC USES:

- Apply to underarms as a naturally-sourced deodorant
- Apply to tired, dry, or cracked feet

A T I N



## OREGANO ESSENTIAL OIL

### COSMETIC USES:

- Dilute with Fractionated Coconut Oil and apply to cuticles and nailbeds to maintain healthy-looking fingernails and toenails

### FOOD USES:

- Replace one tablespoon of dry oregano with one drop in Italian dishes

A T I D



## DEEP BLUE® ESSENTIAL OIL BLEND

### COSMETIC USES:

- Dilute Deep Blue® with Fractionated Coconut Oil and massage into growing kid's legs

### HOUSEHOLD USES:

- Diffuse for an invigorating scent during a workout

T S



## EASY AIR® ESSENTIAL OIL BLEND

### COSMETIC USES:

- Add three drops to shower floor for an aroma that promotes vitality

### HOUSEHOLD USES:

- Diffuse during changing seasons for a relaxing aroma

A T S



## ZENGEST® ESSENTIAL OIL BLEND

### COSMETIC USES:

- Use topically before a long flight or road trip for a calming aroma

### FOOD USES:

- Add one drop to water after enjoying a large meal

A T I N



## ON GUARD® ESSENTIAL OIL BLEND

### FOOD USES:

- Combine with honey and warm water to create a soothing herbal tea

### HOUSEHOLD USES:

- Diffuse to cleanse the air and provide a sweet, spicy aroma

A T I S



# *dōTERRA* ESSENTIAL AROMATICS®

dōTERRA Essential Aromatics® contains **SIX** unique essential oil blends that have been carefully formulated to provide targeted benefits. Each delicate blend contains pure essential oils that can be used aromatically or topically to help balance and promote overall well-being. Just a few drops of these complex, fragrant blends can elicit profound responses.

## **dōTERRA ESSENTIAL AROMATICS® BLENDS USE INSTRUCTIONS:**

- Use aromatically in an essential oil diffuser
- Apply 1 or 2 drops in your palms, rub hands together, cup in front of your nose, and inhale deeply (do not touch eyes)
- Dilute and apply topically to aromatherapy touch points such as the back of the neck, the wrists, and over the heart

### **dōTERRA ESSENTIAL AROMATICS® COLLECTION**

<b>60203916</b>	Six 5 mL bottles
\$270.33 retail	\$202.75 wholesale   158.5 PV







### dōTERRA MOTIVATE® ESSENTIAL OIL BLEND

Enjoy the uplifting and energizing aroma of the dōTERRA Motivate blend of mint and citrus essential oils.

#### COSMETIC USES:

- Use topically before a sporting event or other competitions

#### HOUSEHOLD USES:

- Diffuse when working on a project for an energizing aroma that will keep you motivated



<b>31741713</b>	5 mL bottle
\$39.33 retail	\$29.50 wholesale   24.5 PV



### dōTERRA CHEER® ESSENTIAL OIL BLEND

The dōTERRA Cheer® blend of citrus and spice essential oils provides a cheerful and happy fragrance that will brighten any day.

#### COSMETIC USES:

- Apply to a cotton ball and place in car's AC vent for an energizing aroma while driving

#### HOUSEHOLD USES:

- Diffuse to promote a positive, uplifting environment



<b>31721713</b>	5 mL bottle
\$42.67 retail	\$32.00 wholesale   26.5 PV



### dōTERRA PASSION® ESSENTIAL OIL BLEND

When feelings of boredom and disinterest take over, the dōTERRA Passion® will help you with its spice and herb aroma.

#### COSMETIC USES:

- Use during a massage for a passionate fragrance

#### HOUSEHOLD USES:

- Diffuse for a fragrance that will spark creativity



<b>31761713</b>	5 mL bottle
\$71.67 retail	\$53.75 wholesale   44.5 PV



### dōTERRA FORGIVE® ESSENTIAL OIL BLEND

dōTERRA Forgive® is a blend of tree and herb essential oils that provides a refreshing aroma that promotes a grounding effect.

#### COSMETIC USES:

- Add a drop to a warm bath for a soothing experience

#### HOUSEHOLD USES:

- Apply to a cotton ball and place in car's AC vent for a calming aroma



<b>31751713</b>	5 mL bottle
\$34.33 retail	\$25.75 wholesale   21.5 PV



### dōTERRA CONSOLE® ESSENTIAL OIL BLEND

dōTERRA Console® uses sweet floral and tree essential oils to create a comforting effect, putting you on a hopeful path of emotional well-being.

#### COSMETIC USES:

- Apply to neck and wrists for an encouraging aroma

#### HOUSEHOLD USES:

- Diffuse for a comforting aroma



<b>31731713</b>	5 mL bottle
\$63.33 retail	\$47.50 wholesale   39.5 PV



### dōTERRA PEACE® ESSENTIAL OIL BLEND

dōTERRA Peace® blend of floral and mint essential oils is a positive reminder you don't have to be perfect to find peace. Slow down, take a deep breath, and reconnect with the composed, collected you.

#### COSMETIC USES:

- Add to Fractionated Coconut Oil and use in a soothing massage

#### HOUSEHOLD USES:

- Diffuse for a comforting aroma during times of difficulty



<b>31711713</b>	5 mL bottle
\$51.33 retail	\$38.50 wholesale   32 PV

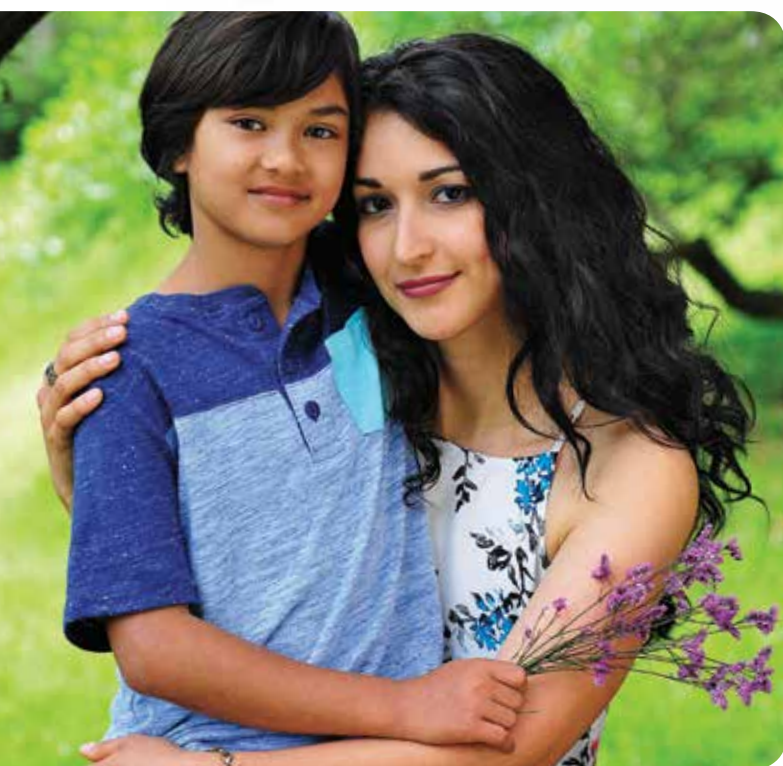
# dōTERRA ESSENTIAL AROMATICS® TOUCH

The dōTERRA Essential Aromatics® Touch Collection contains **SIX** unique essential oil blends combined with Fractionated Coconut Oil in 10 mL roll-ons for convenient and gentle topical application. These proprietary blends provide benefits for the entire family and can be applied every day to specific points on the body, especially to aromatherapy touch points.



## dōTERRA ESSENTIAL AROMATICS® TOUCH COLLECTION

<b>60200720</b>	Six 10 mL roll-on
\$173.33 retail	\$130.00 wholesale   107.5 PV



## dōTERRA ESSENTIAL AROMATICS® TOUCH POINTS:

Each dōTERRA Essential Aromatics® Touch blend can be applied specifically on the body to your aromatherapy touch points, or to other areas of the body, as you see fit.

- Rub **dōTERRA Motivate®** Touch into your temples
- Rub **dōTERRA Cheer®** Touch over your heart
- Apply **dōTERRA Passion®** Touch on your wrists
- Rub **dōTERRA Forgive®** Touch on the soles your feet
- Massage **dōTERRA Console®** Touch into your shoulders
- Apply **dōTERRA Peace®** Touch to your wrists



### dōTERRA MOTIVATE® TOUCH ESSENTIAL OIL BLEND

Enjoy the benefits of dōTERRA Motivate® in a base of Fractionated Coconut Oil. Ideal for children and individuals with sensitive skin.

#### COSMETIC USES:

- Apply to neck or shirt collar before a presentation
- Place on bottoms of feet in the morning before a long workday



<b>60200717</b>	10 mL roll-on
\$25.67 retail	\$19.25 wholesale   16 PV



### dōTERRA CHEER® TOUCH ESSENTIAL OIL BLEND

Enjoy the benefits of dōTERRA Cheer® in a base of Fractionated Coconut Oil. Ideal for children and individuals with sensitive skin.

#### COSMETIC USES:

- Apply to neck and wrists for an elevating aroma
- Use in conjunction with a full body massage for an invigorating experience



<b>60200715</b>	10 mL roll-on
\$27.67 retail	\$20.75 wholesale   17 PV



### dōTERRA FORGIVE® TOUCH ESSENTIAL OIL BLEND

Enjoy the benefits of dōTERRA Forgive® in a base of Fractionated Coconut Oil. Ideal for children and individuals with sensitive skin.

#### COSMETIC USES:

- Use during a massage to promote feelings of serenity
- Apply to neck and wrists for a grounding and renewing aroma



<b>60200716</b>	10 mL roll-on
\$22.33 retail	\$16.75 wholesale   14 PV



### dōTERRA PASSION® TOUCH ESSENTIAL OIL BLEND

Enjoy the benefits of dōTERRA Passion® in a base of Fractionated Coconut Oil. Ideal for children and individuals with sensitive skin.

#### COSMETIC USES:

- Apply to wrists and heart throughout the day
- Place on bottoms of feet in the morning for an energizing foot massage



<b>60200713</b>	10 mL roll-on
\$46.67 retail	\$35.00 wholesale   29 PV



### dōTERRA CONSOLE® TOUCH ESSENTIAL OIL BLEND

Enjoy the benefits of dōTERRA Console® in a base of Fractionated Coconut Oil. Ideal for children and individuals with sensitive skin.

#### COSMETIC USES:

- Place on bottoms of feet in the morning for a calming foot rub
- Apply to neck and wrists for an encouraging aroma



<b>60200719</b>	10 mL roll-on
\$41.00 retail	\$30.75 wholesale   25.5 PV



### dōTERRA PEACE® TOUCH ESSENTIAL OIL BLEND

Enjoy the benefits of dōTERRA Peace® in a base of Fractionated Coconut Oil. Ideal for children and individuals with sensitive skin.

#### COSMETIC USES:

- Apply to neck and wrists for a peaceful fragrance
- Place on bottoms of feet in the morning for a relaxing aroma



<b>60200718</b>	10 mL roll-on
\$34.33 retail	\$25.75 wholesale   21.5 PV



# dōTERRA TOUCH® OIL BLENDS

Striking the proper balance between protecting sensitive skin while still delivering the benefits found in essential oils is not just a matter of science, but also of art. dōTERRA Touch® has achieved that balance. Making application simple with 10 mL roll-ons, dōTERRA Touch® products are ideal for children, adults, and especially those with sensitive skin. You can start benefiting from essential oils immediately with these ready-to-use bottles. Enjoy the convenience and benefits of dōTERRA Touch® today.



## JASMINE TOUCH BLEND

Regarded as the "King of Flowers," Jasmine is prized for its highly fragrant aroma and ability to help reduce the appearance of skin imperfections and promote a healthy-looking, glowing complexion.

### COSMETIC USES:

- Apply topically to moisturize skin
- Add to skincare routine for a radiant complexion



<b>60202907</b>	10 mL roll-on
\$71.67 retail	\$53.75 wholesale
	44.5 PV



## NEROLI TOUCH BLEND

Neroli essential oil is derived from the flowers of the bitter orange tree. The aroma of Neroli essential oil has been known to support relaxation, and to promote an overall sense of well-being.

### COSMETIC USES:

- Use topically on wrists and inhale for a calming aroma
- Incorporate into beauty routine for a youthful-looking complexion



<b>60202906</b>	10 mL roll-on
\$80.33 retail	\$60.25 wholesale
	50 PV



## ROSE TOUCH BLEND

The labor-intensive and delicate process of harvesting and distilling rose petals produces a sweet aroma that's renowned in the perfume and essential oil industries. Rose Touch can promote a healthy-looking, even skin tone and can be used as a romantic personal fragrance.

### COSMETIC USES:

- Use in massage for an elevating, enriching experience
- Apply to areas of concern twice daily to enhance the appearance of healthy-looking skin



<b>60202901</b>	10 mL roll-on
\$119.67 retail	\$89.75 wholesale
	69 PV



## MAGNOLIA NEW! TOUCH BLEND

While essential oil extract from the magnolia flower has a very similar chemistry to other floral oils such as Lavender and Ylang Ylang, it has a unique aroma. Magnolia essential oil is particularly known for its relaxing aroma as well as being beneficial to the skin.

### COSMETIC USES:

- Apply topically to soothe skin.
- Combine with Neroli and apply to chest or back of neck for a relaxing aromatic massage
- Incorporate into beauty routine for a clean and healthy-looking complexion



<b>60207637</b>	10 mL roll-on
\$48.00 retail	\$36.00 wholesale
	30 PV



## dōTERRA TOUCH® COLLECTION

Includes **NINE** of our most popular essential oils:

### Essential Oils Singles:

- Frankincense
- Lavender
- Peppermint
- Oregano
- Tea Tree

### Essential Oils Blends:

- Deep Blue®
- Easy Air®
- On Guard®
- ZenGest®

Our dōTERRA Touch® Collection is a convenient purchase for supporting the whole family's every day needs.

**60200639** | Nine 10 mL roll-ons

\$296.33 retail | \$222.25 wholesale | 174 PV



### LAVENDER TOUCH BLEND

Enjoy the benefits of Lavender in a base of Fractionated Coconut Oil. Ideal for children and individuals with sensitive skin.

#### COSMETIC USES:

- Apply to bottom of feet before bedtime for a relaxing scent that promotes a peaceful sleep

T | N

**60200459** | 10 mL roll-on

\$25.67 retail | \$19.25 wholesale

16 PV



### PEPPERMINT TOUCH BLEND

Enjoy the benefits of Peppermint in a base of Fractionated Coconut Oil. Ideal for children and individuals with sensitive skin.

#### COSMETIC USES:

- Massage into neck and shoulders to help relax

T | N

**60200461** | 10 mL roll-on

\$24.67 retail | \$18.50 wholesale

15.5 PV



### FRANKINCENSE TOUCH BLEND

Enjoy the benefits of Frankincense in a base of Fractionated Coconut Oil. Ideal for children and individuals with sensitive skin.

#### COSMETIC USES:

- Massage onto hands and feet for a warm, soothing effect after strenuous activity
- Apply to cuticles and nailbeds to maintain healthy-looking fingernails and toenails

T | N

**60200575** | 10 mL roll-on

\$77.67 retail | \$58.25 wholesale

48 PV



### TEA TREE TOUCH BLEND

Enjoy the benefits of Tea Tree in a base of Fractionated Coconut Oil. Ideal for children and individuals with sensitive skin.

#### COSMETIC USES:

- Apply to underarms as a naturally-sourced deodorant
- Apply to tired, dry, or cracked feet

T | N

**60200460** | 10 mL roll-on

\$21.33 retail | \$16.00 wholesale

13 PV



### ZENGEST® TOUCH BLEND

Enjoy the benefits of ZenGest® in a base of Fractionated Coconut Oil. Ideal for children and individuals with sensitive skin.

#### COSMETIC USES:

- Use topically before a long flight or road trip for a calming aroma
- Use for a soothing abdominal massage

T | N

**60200463** | 10 mL roll-on

\$37.67 retail | \$28.25 wholesale

23.5 PV



### EASY AIR® TOUCH BLEND

Enjoy the benefits of Easy Air® in a base of Fractionated Coconut Oil. Ideal for children and individuals with sensitive skin.

#### COSMETIC USES:

- Use topically before outdoor activity
- Apply topically to chest and under nose for an invigorating aroma

T | N

**60200456** | 10 mL roll-on

\$24.00 retail | \$18.00 wholesale

15 PV



### ON GUARD® TOUCH BLEND

Enjoy the benefits of On Guard® in a base of Fractionated Coconut Oil. Ideal for children and individuals with sensitive skin.

#### COSMETIC USES:

- Rub on hands as a cleanser

T | N

**60200457** | 10 mL roll-on

\$37.67 retail | \$28.25 wholesale

23.5 PV



### OREGANO TOUCH BLEND

Enjoy the benefits of Oregano in a base of Fractionated Coconut Oil. Ideal for children and individuals with sensitive skin.

#### COSMETIC USES:

- Rub into hands as a cleansing agent

T | D

**60200462** | 10 mL roll-on

\$24.67 retail | \$18.50 wholesale

15.5 PV



### DEEP BLUE® TOUCH BLEND

Enjoy the benefits of Deep Blue® in a base of Fractionated Coconut Oil. Ideal for children and individuals with sensitive skin.

#### COSMETIC USES:

- Massage into lower back

T | S

**60200458** | 10 mL roll-on

\$73.67 retail | \$55.25 wholesale

45.5 PV





dōTERRA Healing Hands™ is committed to improving lives through partnering with organizations that offer hope to millions around the world. dōTERRA Healing Hands™ seeks to bring healing and hope to the world, for lives free of disease and poverty, and to ultimately empower impoverished communities with the tools needed to become self-reliant. dōTERRA provides all the overhead and administrative costs for dōTERRA Healing Hands™, ensuring that 100 percent of all donations go directly to those receiving aid. For more information, please visit [dotterrahealinghands.org](http://dotterrahealinghands.org).



#### **dōTERRA® SPA ROSE HAND LOTION**

dōTERRA® SPA Rose Hand Lotion is a light, alluring lotion with CPTG® Rose essential oil that promotes smooth, beautiful skin. This silky formula contains naturally-sourced moisturizers and humectants that leave hands soft, supple, and nourished. Known for its skin-beneficial properties, Rose essential oil enhances this lotion with the authentic and uplifting aroma of rose petals.

- Bulgarian Rose essential oil is known for its ability to promote smooth, glowing skin
- Sunflower and macadamia seed oils are known for their exceptional moisturizing properties and ability to retain moisture in the skin
- Non-greasy formula absorbs quickly leaving skin looking healthy, soft, and smooth

<b>60200781</b>	3.3 fl oz/100 mL
\$34.33 retail	\$25.75 wholesale   0 PV



#### **dōTERRA HOPE® TOUCH**

dōTERRA Hope® Touch is a distinct essential oil blend that combines the fresh scent of Bergamot with Ylang Ylang, Frankincense, and the sweet scent of Vanilla Bean Absolute. With each purchase of dōTERRA Hope® Touch, the full purchase price (\$25.75) is donated to the dōTERRA Healing Hands Foundation™ which supports OUR Rescue, an organization of the world's experts in extraction operations and anti-child-trafficking.

##### **COSMETIC USES:**

- Apply to wrists, neck, and pulse points for a personalized fragrance
- Keep in purse and apply throughout the day to uplift mood

##### **HOUSEHOLD USES:**

- Roll on a sachet and keep in drawers or closets to give clothes a fresh scent



<b>60202235</b>	10 mL roll-on
\$34.33 retail	\$25.75 wholesale   0 PV



# DIFFUSERS

dōTERRA® helps facilitate the different options for the use of essential oils in their various forms by providing quality products that follow traditional applications as well as more technologically advanced applications with state-of-the-art diffusers.



## dōTERRA LUMO™ DIFFUSER

Transform any room into a serene or uplifting environment by diffusing CPTG® essential oils with a custom-designed, nature-inspired, ultrasonic diffuser.

- Ultrasonic technology
- Seven lighting color options
- Maple wood base
- Coverage of up to 540 sq. feet

**60204952**

\$119.67 retail	\$89.75 wholesale	42.5 PV
-----------------	-------------------	---------



## PETAL DIFFUSER®

The Petal Diffuser® is a small, user-friendly diffuser that delivers benefits to your family and home. It has a relaxing mist and soft white ambient light, making it ideal for nighttime diffusion, and can cover up to 330 square feet. The Petal Diffuser has three timed settings — 1, 2, and 4 hours — allowing you to customize the release of essential oils into the air.

- 1, 2, and 4 hour diffuser settings
- Optional LED light
- Ultra-fine mist reaches up to 330 sq. feet

**33151713**

\$80.33 retail	\$60.25 wholesale	21 PV
----------------	-------------------	-------



## AROMA LITE DIFFUSER™

Experience the aromatic benefits of dōTERRA CPTG® essential oils with the Aroma Lite™ Diffuser. Utilizing real-time atomization technology, the Aroma Lite Diffuser creates an ultra-fine mist output of 1–3 microns for maximum diffusion of dōTERRA essential oils.

- Silently and powerfully diffuses essential oils
- Features four LED mist settings and an optional night light
- Designed to be small and compact—perfect for traveling and hotel use

**33131713**

\$153.67 retail	\$115.25 wholesale	42.5 PV
-----------------	--------------------	---------

# dōTERRA® KIDS COLLECTION

Made up of six unique kid-friendly blends, the dōTERRA® Kids Collection is perfect for using with little ones on-the-go! It contains blends formulated specifically for navigating the ups-and-downs of childhood. The new pre-diluted essential oil blends are the perfect way to introduce your children to the many benefits of essential oils safely.



## dōTERRA KIDS COLLECTION NEW!

<b>60207646</b>	Six 10 mL roll-ons
\$162.67 retail	\$122.00 wholesale   90 PV



### THINKER™ NEW! FOCUS BLEND

Ideal for everyone and for daily use, Thinker Supportive Blend is the optimal support to use when distractions are high. Its unique aroma helps instill feelings of clarity.

- Features Vetiver, Peppermint, Clementine, and Rosemary perfectly combined with Fractionated Coconut Oil
- Roll onto wrists or hands and inhale deeply
- Promotes a sense of clarity



<b>60207645</b>	10 mL roll-on
\$27.33 retail	\$20.50 wholesale
	17 PV



### CALMER™ NEW! RESTFUL BLEND

Calmer Restful Blend promotes a serene atmosphere, allowing bedtime to be a peaceful and welcomed experience.

- Features Lavender, Cananga, Buddha Wood, and Roman Chamomile in a base of Fractionated Coconut Oil
- Roll-on to the back of the neck and chest to promote a restful and calm sleep
- Apply to bottoms of feet at bedtime to help unwind before going to sleep.



<b>60207640</b>	10 mL roll-on
\$32.33 retail	\$24.25 wholesale
	20 PV



### STRONGER™ NEW! PROTECTIVE BLEND

Stronger Protective Blend is refreshing to the senses and works as the perfect blend for daily resiliency, or when you are not feeling your best.

- Features Cedarwood, Litsea, Frankincense, and Rose in a base of Fractionated Coconut Oil
- Roll onto hands, knees, and feet after a long day of activity
- Use Stronger for a uplifting aroma



<b>60207644</b>	10 mL roll-on
\$24.00 retail	\$18.00 wholesale
	15 PV



### RESCUER™ NEW! SOOTHING BLEND

Rescuer Soothing Blend promotes a relaxing sensation, resilience, and comfort, while being gentle enough for sensitive skin.

- Features Copaiba, Lavender, Spearmint, and Zanthoxylum in a base of Fractionated Coconut Oil
- Roll Rescuer onto children's legs before bedtime, or after a strenuous activity
- Massage into shoulders, neck, and back for a comforting experience



<b>60207642</b>	10 mL roll-on
\$25.67 retail	\$19.25 wholesale
	16 PV



### STEADY™ NEW! GROUNDING BLEND

Perfect for daily use or as needed, Steady Grounding Blend has a soft, inviting, and slightly fruity aroma that promotes feelings of relaxation, and allowing yourself to find balance.

- Features Amyris, Balsam Fir, Coriander, and Magnolia in a base of Fractionated Coconut Oil
- Use Steady to create a tranquil environment when experiencing nervous feelings
- Apply to the back of the neck or bottoms of the feet after an event-filled day



<b>60207643</b>	10 mL roll-on
\$25.67 retail	\$19.25 wholesale
	16 PV



### BRAVE™ NEW! COURAGE BLEND

With a bright and warm aroma, Brave is the perfect blend to invigorate and empower you when you are feeling unmotivated.

- Features Wild Orange, Amyris, Osmanthus, and Cinnamon Bark in a base of Fractionated Coconut Oil
- Help reduce feelings of occasional tension
- Helps promote feelings of courage and confidence



<b>60207641</b>	10 mL roll-on
\$36.00 retail	\$27.00 wholesale
	22.5 PV



## *Work longer and harder with* **DEEP BLUE®**

With unique cooling, soothing, and comforting effects on the skin, products in the Deep Blue Collection are consistently some of dōTERRA's top sellers. Each product in this line is a perfect complement to an active lifestyle.





### DEEP BLUE® RUB SOOTHING LOTION

Infused with Deep Blue® Essential Oil Blend, Deep Blue Rub provides a soothing and cooling effect.

- Formulated with the Deep Blue® proprietary blend of essential oils and other powerful ingredients
- Deep Blue Rub is blended in a base of moisturizing emollients that leave your skin soft and non-greasy
- Provides a cooling and soothing sensation to targeted areas

<b>38901713</b>	4 fl oz/120 mL	
\$54.67 retail	\$41.00 wholesale	32 PV



### DEEP BLUE® TOP SELLER ESSENTIAL OIL BLEND

Formulated to provide a cooling sensation, Deep Blue® serves as an enriching blend of oils perfect for a massage.

#### COSMETIC USES:

- Dilute Deep Blue with Fractionated Coconut Oil and massage into growing kid's legs

#### HOUSEHOLD USES:

- Diffuse for an invigorating scent during a workout

T S

<b>31051713</b>	5 mL bottle	
\$56.33 retail	\$42.25 wholesale	35 PV
<b>60201831</b>	10 mL roll-on	
\$101.00 retail	\$75.75 wholesale	58.5 PV



### DEEP BLUE® POLYPHENOL COMPLEX® NEW!

The brand name Deep Blue® is synonymous with an active lifestyle. Popular with athletes and active adventurers, the CPTG Certified Pure Tested Grade® essential oil blend and its complementary products are highly trusted among their users. Now the Deep Blue® line boasts an ingestible product designed to support you in your daily activity regimen. The Deep Blue Polyphenol Complex® delivers polyphenol extracts of frankincense, turmeric, green tea, ginger, pomegranate, and grape seed. Take as needed, or take every day for long-lasting benefits.

- Source of antioxidants
- Helps protect against and reduce oxidative damage caused by free radicals

<b>34361813</b>	60 capsules	NPN80071413
\$101.67 retail	\$76.25 wholesale	63 PV



### DEEP BLUE® TOUCH TOP SELLER ESSENTIAL OIL BLEND

Enjoy the benefits of Deep Blue® in a base of Fractionated Coconut Oil. Ideal for children and individuals with sensitive skin.

#### COSMETIC USES:

- Massage into lower back
- Rub on fingers, wrists, shoulders, and neck after a long workday
- Apply to feet and knees before and after exercise for an invigorating and cooling effect to your skin

<b>60200458</b>	10 mL bottle	
\$73.67 retail	\$55.25 wholesale	45.5 PV

## Support immune function with ON GUARD®

Designed to promote a clean and safe home, the On Guard® Collection uses essential oils with specific cleansing properties to help purify your home and provide your family with the healthy environment needed to thrive. From laundry to hygiene or cleaning, the On Guard® Collection products are powerful enough to provide serious cleansing benefits for the entire family.



### ON GUARD® FOAMING HAND WASH

On Guard® Foaming Hand Wash is a gentle alternative to other soaps that may dry and irritate sensitive skin. Fortified with the power of natural dōTERRA CPTG Certified Pure Tested Grade® essential oils, On Guard® Foaming Hand Wash provides the benefits of one of the most popular proprietary dōTERRA essential oil blends. On Guard® Foaming Hand Wash cleans and softens hands while providing an invigorating aroma of essential oils that leaves your hands smelling fresh and citrus clean. Conveniently packaged in a 16-fl oz refill bottle.

- Gentle cleansers and emollients clean and soften hands throughout the day without drying sensitive skin
- The spice and citrus aromas of On Guard® invigorate the senses during and after use

### HANDWASH WITH 2 DISPENSERS

<b>60200596</b>	473 mL Hand Wash, 2 dispensers
\$38.33 retail	\$28.75 wholesale   19.5 PV

### HANDWASH SINGLE REFILL

<b>38011713</b>	473 mL Hand Wash
\$31.67 retail	\$23.75 wholesale   19.5 PV

### HANDWASH TWIN PACK REFILL

<b>60200778</b>	473 mL Hand Wash
\$57.33 retail	\$43.00 wholesale   35.5 PV

### DISPENSER

<b>38030000</b>	235 mL Dispenser
\$3.33 retail	\$2.50 wholesale   0 PV

### ON GUARD® LAUNDRY DETERGENT

The On Guard® Laundry Detergent is a naturally based, highly concentrated 6X laundry detergent that utilizes the power of On Guard® Essential Oil Blend and bio-originated enzymes for amazingly clean clothes.

- Excellent choice for your family to keep your clothes fresh and clean
- 64 loads in each bottle; 1 tablespoon = 1 load (using a high efficiency washer)
- Great as a pre-treatment for stains

<b>38981713</b>	947 mL
\$42.00 retail	\$31.50 wholesale   21.5 PV





### ON GUARD® CLEANER CONCENTRATE

The ideal cleaner, On Guard® Concentrate is fortified with On Guard Essential Oil Blend.

- Features a biodegradable formula safe for the entire family
- Combines plant-based derivatives with the On Guard® Essential Oil Blend
- Perfect for hard surface cleaning needs with exceptional results
- Leaves behind a clean, invigorating scent

<b>38141713</b>	355 mL bottle
\$24.67 retail	\$18.50 wholesale   10.5 PV



### ON GUARD® MIST NEW!

One of doTERRA's most popular essential oil blends, On Guard® provides an invigorating citrus-spice aroma and contains surface cleansing properties. The On Guard® Mist, infused with moisturizing apple extract, cleanses hands when soap and water are unavailable. Conveniently packaged in a travel-sized bottle, the On Guard® Mist is perfect for use on the go.

- Use to cleanse hands after touching gym equipment, door handles, shopping carts, or other communal surfaces
- Spray in gym bag, shoes, and other smelly locations as a surface cleanser to kill odor-causing bacteria

<b>60206797</b>	27 mL
\$11.00 retail	\$8.25 wholesale   5 PV



### ON GUARD® TOP SELLER! ESSENTIAL OIL BLEND

The On Guard® blend has a spicy, energizing, uplifting aroma, and a chemical makeup that has cleansing properties.

#### COSMETIC USES:

- Dilute with Fractionated Coconut Oil and rub on hands as a natural cleanser

#### HOUSEHOLD:

- Diffuse to cleanse the air and provide a sweet, spicy aroma
- Create an all-purpose cleaner by combining with water in a spray bottle

A T I S

<b>31101813</b>	15 mL bottle
\$58.00 retail	\$43.50 wholesale   36 PV



### ON GUARD® TOUCH BLEND

Enjoy the benefits of On Guard® in a base of Fractionated Coconut Oil. Ideal for children and individuals with sensitive skin.

#### COSMETIC USES:

- Rub on hands as a cleanser

T N

<b>60200457</b>	10 mL roll-on
\$37.67 retail	\$28.25 wholesale   23.5 PV



### ON GUARD® WHITENING TOOTHPASTE

Clean teeth gently with the added benefit of On Guard® Essential Oil Blend.

- Fluoride free formulation
- Unique cinnamon-mint flavour mixed with xylitol for fresh and clean breath and toothbrush
- Boasts the benefits of On Guard® Essential Oil Blend

<b>38911713</b>	125 g
\$14.67 retail	\$11.00 wholesale   5.5 PV



## Quick and Effective CORRECT-X®

Frankincense, Helichrysm, Tea Tree, Cedarwood, and Lavender—all CPTG® essential oils—form the base of dōTERRA Correct-X. This multi-purpose, natural-derived ointment helps soothe the skin and keep it clean. Correct-X provides a moisture barrier that helps protect damage while simultaneously soothing and hydrating the skin. This petroleum- and preservative-free ointment absorbs quickly and is gentle and non-irritating, making it ideal for sensitive skin.



### **CORRECT-X®** ESSENTIAL OIL OINTMENT

Correct-X® is a topical ointment using powerful CPTG® essential oils that assist in soothing skin.

- Helps soothe while simultaneously hydrating
- Absorbs quickly and is gentle and non-irritating, making it ideal for sensitive skin
- Soothe the skin

<b>60111713</b>	15 mL	
\$20.67 retail	\$15.50 wholesale	10.5 PV



### **FRACTIONATED COCONUT OIL**

Combine dōTERRA® Fractionated Coconut Oil with your favorite dōTERRA essential oils for your own readily-absorbable blend.

- Feather-light emollient provides a soothing barrier
- Ideal for combining with essential oils for topical application
- Completely soluble with all essential oils; odorless, colorless, and non-staining



<b>31641713</b>	115 mL bottle	
\$20.67 retail	\$15.50 wholesale	13 PV

# dōTERRA Specialized SUPPLEMENTS

Biological, environmental, and physiological factors all contribute to each individual's nutritional health needs being unique. This means that some require an additional nutritional boost in different areas. Through cutting-edge scientific development, dōTERRA® has provided a way to give that extra boost with specialized supplements.



## dōTERRA LIFELONG VITALITY™ CONVENIENCE PACK

DIETARY SUPPLEMENTS INCLUDING ALPHA CRS®+, MICROPLEX VMz™, AND xEO MEGA®

- **xEO Mega®** NPN 80074456—Combining dōTERRA essential oils with natural marine- and plant-sourced omega 3 oils and carotenoids, this product helps support cardiovascular health, cognitive health, and brain function. Provides antioxidants that help fight, protect against, and reduce oxidative damage caused by free radicals.
- **Microplex VMz™** NPN 80075879—This product lives up to a high-standard of vitamin and mineral supplementation as it provides bioavailable vitamins and minerals that may be lacking in most modern diets.
- **Alpha CRS+®** NPN 80082975—This product is formulated with natural botanical extracts to provide antioxidants to protect cells against oxidative damage from free radicals.

60202934

\$126.67 retail	\$95.00 wholesale	60 PV
-----------------	-------------------	-------



## VEGGIE CAPS

Made of inert vegetable ingredients, the Veggie Caps help you customize your daily wellness routine in a simple and convenient way. These HPMC food-grade capsules allow you to take dōTERRA natural health products approved for internal use.

- Free of preservatives, gelatin, wheat, sugar, starch, dairy, and animal products
- Made of inert vegetable ingredients that do not interfere with digestion
- Includes 160 HPMC capsules

60204616	160 capsules
\$7.00 retail	\$5.25 wholesale   0 PV



## TERRAZYME® NEW! DIGESTIVE ENZYME COMPLEX

TerraZyme® is a proprietary blend of active whole-food enzymes and supporting cofactors that are often deficient in cooked, processed, and preservative-laden foods. The powerful combination of digestive enzymes found in TerraZyme® helps digest proteins. It also helps prevent gastrointestinal intolerance of oligosaccharides/fermentable carbohydrates. TerraZyme® includes a variety of whole-food enzymes that help with digestion.

- Helps digest proteins
- Helps reduce gas production/flatulence following a meal rich in fermentable carbohydrates (such as vegetables, pulses/legumes/beans and whole grains)
- Helps prevent gastrointestinal intolerance of oligosaccharides/fermentable carbohydrates

3511813	90 vegetable capsules	NPN80077027
\$64.00 retail	\$48.00 wholesale	39.5 PV



MADE WITH SLS-FREE  
VEGETABLE CAPSULES



# Clean, smooth skin starts with ESSENTIAL SKIN CARE COLLECTION

dōTERRA® Essential Skin Care is a family of skin care products designed to keep your skin feeling and looking young, healthy, and gorgeous by maximizing the power of carefully selected CPTG® Certified Pure Tested Grade® essential oils combined with cutting-edge ingredient technologies and nature-based extracts in each product. Target and prevent future signs of aging with dōTERRA® Essential Skin Care.



## ESSENTIAL SKIN CARE COLLECTION

Includes Facial Cleanser, Invigorating Scrub, Pore Reducing Toner, Tightening Serum, Brightening Gel, Eye Cream, Moisturizer, and Hydrating Cream.

<b>60206177</b>		
\$357.67 retail	\$268.25 wholesale	214.5 PV

### ANTI-AGING EYE CREAM

dōTERRA® Anti-Aging Eye Cream combines clinically proven ingredients with CPTG® essential oils of Frankincense, Ylang Ylang, and Blue Tansy to target the signs of aging around the delicate eye area, helping reduce the appearance of fine lines and wrinkles over time. This innovative formula moisturizes, decreases the appearance of dark circles, and improves skin firmness and tone.

- Clinically tested
- Meadowfoam seed oil provides deep moisture
- Biopolymers made from Pullulan and Red Algae Extract provide a noticeable tightening and lifting effect from the first use

<b>60203357</b>	0.5 fl oz/15 mL	
\$77.00 retail	\$57.75 wholesale	47.5 PV

### BRIGHTENING GEL

Naturally sourced extracts, vitamins, and cutting-edge ingredient technologies combine with CPTG® essential oils of FCF Bergamot, Juniper Berry, and Melissa to brighten and even skin tone. dōTERRA® Brightening Gel is a gentle and effective way to noticeably brighten the skin by reducing the appearance of dark spots and hyperpigmentation.

- Daisy extract is a naturally sourced skin-brightening agent that acts by promoting even skin tone and reducing the appearance of dark spots
- Vitamin C helps to keep the skin looking youthful while providing skin-brightening benefits
- Microencapsulation technology protects vitamin C from breakdown ensuring the stability and efficient delivery of the vitamin to the skin

<b>60203375</b>	1 fl oz/30 mL	
\$59.00 retail	\$44.25 wholesale	36.5 PV

### INVIGORATING SCRUB

Energize your skin while exfoliating and polishing using dōTERRA® Invigorating Scrub. Grapefruit and Peppermint CPTG® essential oils make exfoliating a refreshing, aromatic experience while leaving skin soft and smooth.

- Tiny jojoba beads first exfoliate and then dissolve to provide unique moisturizing experience
- Contains a polyphenol-rich, brown and red algae extracts to promote a reduction in the appearance of brown (age) spots, resulting in a more even skin tone and clarity

<b>60203373</b>	2.5 oz/70 g	
\$30.67 retail	\$23.00 wholesale	19 PV

**PORE REDUCING TONER**

Formulated to visibly reduce the appearance of pores, dōTERRA® Pore Reducing Toner contains CPTG® Certified Pure Tested Grade® essential oils of Lavender, Ylang Ylang, and German Chamomile to calm sensitive skin, while innovative plant extracts increase skin hydration and support a healthy-looking epidermis.

- Soothes dry skin
- Tones and balances the skin while visibly reducing the appearance of pores

<b>60203356</b>	4 fl oz/118 mL
\$36.00 retail	\$27.00 wholesale   22.5 PV

**HYDRATING CREAM**

dōTERRA® Hydrating Cream enriches skin with its unique moisturizing and hydrating properties while assisting the components of the skin in their regeneration process.

- Reduces the signs of dryness and aging
- Targets the visible signs of aging where they start, helping to reduce the appearance of fine lines and wrinkles by providing intense hydration to the skin

<b>60203359</b>	1.7 fl oz/48 g
\$61.67 retail	\$46.25 wholesale   38 PV

**ANTI-AGING MOISTURIZER**

dōTERRA® Anti-Aging Moisturizer targets the visible signs of aging, helping to reduce the appearance of fine lines and wrinkles with the CPTG® essential oils of Lavender, Jasmine, Geranium, and Frankincense.

- Contains ingredients that promote the look of skin rejuvenation
- Contains an extract of dormant Summer Snowflake Flower bulbs to promote a more even skin tone

<b>60203371</b>	1.7 fl oz/50 mL
\$59.00 retail	\$44.25 wholesale   36.5 PV

**FACIAL CLEANSER**

dōTERRA® Facial Cleanser utilizes CPTG® essential oils of Tea Tree and Peppermint to gently cleanse, lifting away impurities and leaving your skin feeling clean, fresh, and flawless!

- Macadamia nut oil conditions the skin
- Proprietary vitamin blend supports overall healthy-looking skin

<b>60203376</b>	4 fl oz/118 mL
\$28.33 retail	\$21.25 wholesale   17.5 PV

**TIGHTENING SERUM**

Helps tighten and smooth the appearance of skin for a luminous complexion. dōTERRA® Tightening Serum puts the power of essential oils to work and makes your skin look and feel younger.

- Contains rhizobium, acacia gum, and proprietary oat extracts, which provide immediate "lifting" effects
- Biomimetic peptides helps reduce the appearance of age spots, resulting in an even complexion

<b>60203354</b>	1 fl oz/30 mL
\$84.67 retail	\$63.50 wholesale   52.5 PV



## Clean, smooth skin starts with HD CLEAN®

HD Clean® is a line of highly effective products that address problem skin at its core. This three-step system works synergistically to purge skin of impurities; promote a smooth, clean complexion. Included in each formula are CPTG® essential oils along with specialized plant extracts proven to improve skin texture and appearance. Using HD Clean® every day will result in a smooth, healthy-looking complexion.

**HD CLEAN® FACIAL LOTION**

Enjoy a beautiful, smooth complexion with HD Clean® Facial Lotion. This lotion contains emollients to promote moisture in the skin for a balanced complexion as well as CPTG® essential oils combined with botanical extracts known to assist in achieving clean and healthy-looking skin.

- Features a unique blend of black cumin seed oil as well as CPTG® essential oils of Ho Wood, Tea Tree, Eucalyptus, Geranium, and Litsea
- Promotes smooth complexion
- Soothes dry skin

<b>49411713</b>	50 mL
\$58.00 retail	\$43.50 wholesale   36 PV

**HD CLEAN® FOAMING FACE WASH**

Discover the perfect solution for problem skin of all ages with the HD Clean® Foaming Face Wash.

- Designed to thoroughly cleanse without stripping away moisture
- Contains CPTG® essential oils and plant extracts that will leave your skin extra clean and soft

<b>49421713</b>	50 mL
\$37.67 retail	\$28.25 wholesale   23.5 PV

**HD CLEAN® TOPICAL BLEND**

The ultimate blend for troubled skin, HD Clean® is made with skin-benefiting essential oils that will help keep the skin looking and feeling smooth, clean, and healthy.

**COSMETIC USES:**

- Implement in facial routine to help keep skin clean
- Combine with nighttime moisturizer for optimal hydration
- Use as part of skincare routine to promote a glowing complexion



<b>60201145</b>	10 mL roll-on
\$36.00 retail	\$27.00 wholesale   22.5 PV

**HD CLEAN® FACIAL COLLECTION**

This collection contains HD Clean® Foaming Face Wash, Topical Blend, and Facial Lotion for a beautifully balanced complexion.

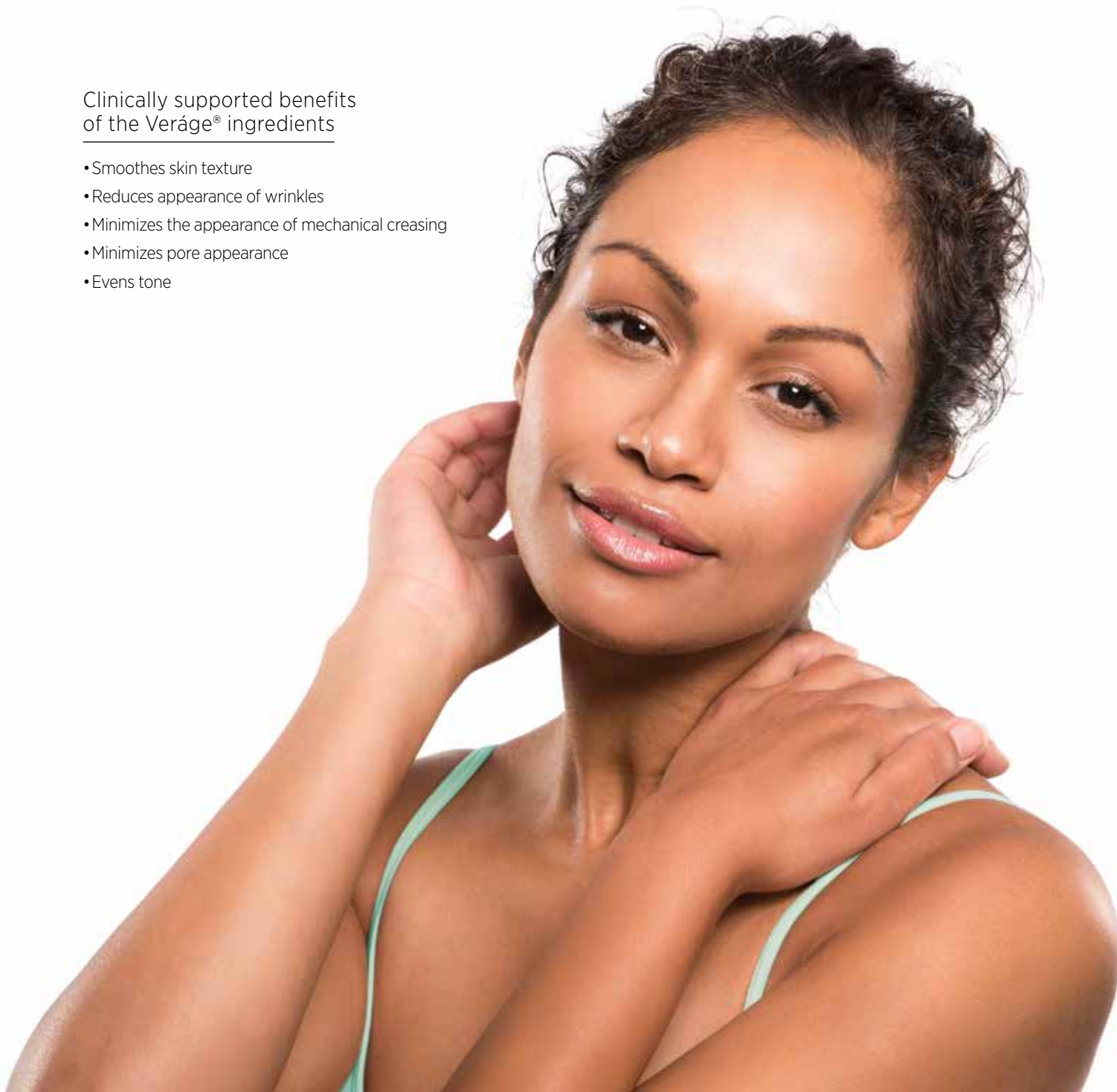
<b>60200752</b>	
\$80.33 retail	\$60.25 wholesale   43.5 PV

## *Healthy, radiant skin with* **dōTERRA VERÁGE®**

dōTERRA Veráge® is an exclusive collection of naturally based skin care products that nourish your skin, helping to reduce the visible signs of aging while also promoting smooth, supple skin. The advanced plant technology used in Veráge® promotes an optimal balance—the same balance found in healthy, youthful-looking skin. Each product contains true gifts from the Earth—nourishing plant extracts, pure and potent essential oils, and select naturally based ingredients. The Veráge® Skin Care Collection delivers benefits your skin will love.

### Clinically supported benefits of the Veráge® ingredients

- Smoothes skin texture
- Reduces appearance of wrinkles
- Minimizes the appearance of mechanical creasing
- Minimizes pore appearance
- Evens tone





## VERÁGE® SKIN CARE COLLECTION

A collection that brings together Veráge® Cleanser, Toner, Immortelle Hydrating Serum, and Moisturizer for beautiful, healthy-looking skin.

**42691713**

\$144.00 retail	\$108.00 wholesale	73.5 PV
-----------------	--------------------	---------

### VERÁGE® TONER

Veráge® Toner combines CPTG® essential oils with nourishing plant extracts to promote the appearance of tightened, toned, and smooth skin — anytime, anywhere. This hydrating toner fortifies and refreshes the skin while invigorating the senses for an energizing boost and a glowing complexion.

- CPTG® essential oils of Ylang Ylang, Palmarosa, Cypress, and Coriander tone and balance skin
- Nourishing plant extracts provide targeted moisture and toning to help skin look its best

**37391713**

1.7 fl oz/50 mL

\$37.67 retail	\$28.25 wholesale	23.5 PV
----------------	-------------------	---------

### VERÁGE® MOISTURIZER

Veráge® Moisturizer combines CPTG® essential oils with plant extracts for hydration and skin nourishment. This light, non-greasy moisturizer absorbs quickly but hydrates deeply, helping to reduce the appearance of fine lines and wrinkles for a smooth, even complexion.

- Formulated with CPTG® essential oils of Juniper Berry, Jasmine, Sea Buckthorn Berry, and Geranium — all known to revitalize the skin
- Uses ingredients to hydrate skin, helping to reduce the appearance of fine lines and wrinkles

**37411713**

1 fl oz/30 mL

\$48.00 retail	\$36.00 wholesale	30 PV
----------------	-------------------	-------

### VERÁGE® IMMORTELLE HYDRATING SERUM

Experience the age-defying effects of Veráge® Immortelle Hydrating Serum. This powerful formula combines CPTG® essential oils with plant extracts for smoother, more youthful-looking skin.

- Utilizes the CPTG® essential oils found in the popular Immortelle® blend for radiant skin
- Provides balance for smoother, more youthful-looking skin

**37401713**

.5 fl oz/15 mL

\$111.00 retail	\$83.25 wholesale	69 PV
-----------------	-------------------	-------

## VERÁGE® CLEANSER

Healthy-looking, smooth skin begins with Veráge® Cleanser. This naturally-based gel cleanser purifies skin for a fresh, youthful-looking complexion.

- Infused with CPTG® essential oils of Wild Orange, Tea Tree, and Basil to gently cleanse and lift away impurities
- Invigorates and cleanses skin while emollients nourish and hydrate

**37381713**

2 fl oz/60 mL

\$42.67 retail	\$32.00 wholesale	26.5 PV
----------------	-------------------	---------





*Beautiful, shiny hair with dōTERRA*  
**SALON ESSENTIALS® HAIR CARE**

Salon Essentials® Hair Care products are inspired by the concept that extremely pure botanical extracts combined with the most advanced technological ingredients will provide unparalleled hair care benefits that optimize beautiful hair and a healthy-looking scalp. Carefully selected CPTG® essential oils deliver targeted benefits in all four products. Protecting Shampoo, Smoothing Conditioner, Salon Essentials Root to Tip Serum®, and Salon Essentials Healthy Hold Glaze® work collectively or individually to promote healthy, soft, and beautifully shiny hair.

## SALON ESSENTIALS® HAIR CARE SYSTEM

Salon Essentials® Hair Care System is the perfect way to experience the amazing benefits of all four dōTERRA hair care products and provide great savings. By purchasing the Protecting Shampoo, Smoothing Conditioner, and the Salon Essentials Root to Tip Serum® in the Salon Essentials® Hair Care System, Salon Essentials Healthy Hold Glaze® comes FREE.

60200654

\$132.33 retail	\$99.25 wholesale	74 PV
-----------------	-------------------	-------



### SALON ESSENTIALS® PROTECTING SHAMPOO

Enjoy the professional formulation of CPTG® essential oils, gentle cleansers, and botanical extracts in Salon Essentials® Protecting Shampoo.

- Gently removes impurities collected on the hair and scalp
- Lightly moisturizes hair, leaving it salon soft and touchable

36221713	8.46 fl oz/250 mL
\$33.33 retail	\$25.00 wholesale   20.5 PV

60203210	32 fl oz/947 mL
\$77.00 retail	\$57.75 wholesale   37 PV

### SALON ESSENTIALS® SMOOTHING CONDITIONER

Give your hair a smooth, finished look and protect it with the professional formula of Salon Essentials® Smoothing Conditioner.

- Features conditioning emollients, botanical extracts, and naturally-sourced proteins
- Includes a proprietary blend of CPTG® essential oils for the hair and scalp
- Smoothes hair and provides an anti-static effect

36231713	8.46 fl oz/250 mL
\$39.33 retail	\$29.50 wholesale   24.5 PV

60203212	32 fl oz/947 mL
\$85.67 retail	\$64.25 wholesale   42.5 PV

### SALON ESSENTIALS® HEALTHY HOLD GLAZE®

Get the all-in-one benefits of a flexible hold, health, and shine for your hair with dōTERRA Salon Essentials Healthy Hold Glaze®.

- Provides immediate conditioning, smoothing, and shine
- When hair is untamable, apply for a light hold and perfect, soft style
- Helps keep hair looking healthy even when exposed to sunlight and blow drying
- Heat activated conditioning

36271713	4 fl oz/120 mL
\$30.67 retail	\$23.00 wholesale   16 PV

### SALON ESSENTIALS® ROOT TO TIP SERUM®

The Root to Tip Serum® provides a healthy environment for your scalp and maximizes the strength and shine of your hair.

- Infused with Lavender, Peppermint, Marjoram, Cedarwood, Lavandin, Rosemary, Niaouli, and Eucalyptus essential oils
- Provides extended protection and hydration to your scalp and hair

36211713	1 fl oz/30 mL
\$60.00 retail	\$45.00 wholesale   37 PV

## LOYALTY REWARDS PRICING

### PROTECTING SHAMPOO 2-PACK

60200743	
\$42.00 retail	\$31.50 wholesale   19.5 PV

### SMOOTHING CONDITIONER 2-PACK

60200742	
\$48.00 retail	\$36.00 wholesale   23 PV

### SHAMPOO AND CONDITIONER

60200741	
\$48.00 retail	\$36.00 wholesale   23 PV





## *Pamper yourself with* **dōTERRA® SPA**

dōTERRA® SPA is a line of CPTG® essential oil-infused products that provide an aromatic and pampering at-home spa experience. Each product has been carefully formulated with naturally-sourced ingredients that leave your skin feeling soft, smooth, and fresh all day long.



### **CLARIFYING MUD MASK**

The dōTERRA® SPA Clarifying Mud Mask is a naturally derived clay mask that provides cleansing and clarifying benefits while reducing the appearance of pores, fine lines, and wrinkles.

- Infused with Myrrh, Juniper Berry, and Grapefruit essential oils—known for their cleansing and smoothing benefits
- Shea butter provides moisturization
- Malachite extract is rich in copper and provides clarifying benefits

<b>37491713</b>	113.4 g
\$24.67 retail	\$18.50 wholesale   12.5 PV



### **REFRESHING BODY WASH**

dōTERRA® SPA Refreshing Body Wash is a naturally derived, oil-infused body wash that provides a rich cleansing and aromatic spa experience.

- Bergamot essential oil cleanses and soothes skin and provides an uplifting, yet grounding aroma
- Grapefruit is cleansing to the skin and has an energizing scent that uplifts mood
- Sodium Methyl Oleoyl Taurate is a mild cleanser derived from essential fatty acids found in vegetable fats and oils

<b>37461713</b>	250 mL
\$21.67 retail	\$16.25 wholesale   10.5 PV



### **MOISTURIZING BATH BAR**

dōTERRA® SPA Moisturizing Bath Bar is a one-of-a-kind bar that provides a unique feel, lather, aroma, and cleansing experience.

- Bergamot essential oil cleanses and soothes skin
- Grapefruit is cleansing to the skin and has an energizing scent that uplifts mood
- Jojoba seed oil deeply moisturizes

<b>37451713</b>	113 g
\$11.67 retail	\$8.75 wholesale   5.5 PV



### HAND & BODY LOTION

dōTERRA® SPA Hand & Body Lotion is a fragrance-free lotion that smoothes and softens skin while blending perfectly with essential oils for a customizable experience.

- Sunflower and macadamia seed oils are known for their moisturizing properties
- Non-greasy formula absorbs quickly leaving skin looking healthy, soft, and smooth

<b>60200795</b>	6.7 fl oz/200 mL
\$24.67 retail	\$18.50 wholesale   15.5 PV

<b>60203471</b>	3 Pack
\$51.00 retail	\$38.25 wholesale   26.5 PV



### CITRUS BLISS® HAND LOTION

dōTERRA SPA Citrus Bliss® Hand Lotion is a light and silky lotion that absorbs quickly while awakening the senses with the exclusive CPTG® Citrus Bliss Essential Oil Blend.

- Citrus Bliss® essential oil blend's refreshing aroma helps uplift the mood
- Sunflower and macadamia seed oils are known for their moisturizing properties
- Convenient size, perfect for travel or for use while at home or work

<b>60200730</b>	2.5 fl oz/75 mL
\$11.00 retail	\$8.25 wholesale   5 PV



### LIP BALMS

dōTERRA® SPA Lip Balm is a formula containing plant oils, botanicals, and essential oils to hydrate and soothe lips while delivering the unique scent and taste of essential oils.

- Uplift your senses with Original Lip Balm containing Wild Orange and Peppermint essential oils
- Experience the scents of paradise with Tropical Lip Balm containing Ylang Ylang, Clementine, and Lime essential oils
- Invigorate the senses with Herbal Lip Balm containing Lemon Verbena, Marjoram, and Spearmint essential oils

#### ORIGINAL

<b>60200725</b>	0.16 oz/4.5 g
\$11.00 retail	\$8.25 wholesale   5 PV

#### TROPICAL

<b>60200727</b>	0.16 oz/4.5 g
\$11.00 retail	\$8.25 wholesale   5 PV

#### HERBAL

<b>60200726</b>	0.16 oz/4.5 g
\$11.00 retail	\$8.25 wholesale   5 PV

#### 3-PACK

<b>60203481</b>	Pack of 3
\$25.00 retail	\$18.75 wholesale   10 PV



### EXFOLIATING BODY SCRUB

dōTERRA® SPA Exfoliating Body Scrub is a naturally-based, indulgent body scrub that gently exfoliates and polishes skin with sugar cane, leaving a healthy glow.

- Wild Orange and Grapefruit essential oils cleanse skin
- Ginger essential oil is soothing and warming to the skin
- Naturally-sourced sugar cane gently exfoliates skin

<b>60200724</b>	8 oz/226 g
\$33.33 retail	\$25.00 wholesale   16 PV



### REPLENISHING BODY BUTTER

Pamper your skin with the rich hydration and luxurious feel of dōTERRA® SPA Replenishing Body Butter. The base of this naturally derived formula combines shea and cocoa seed butters, known for their deep moisturization and ability to promote skin suppleness.

- Wild Orange essential oil is known for its cleansing benefits
- Douglas Fir essential oil is cleansing to the skin and provides uplifting aromatic benefits
- Frankincense essential oil helps rejuvenate the appearance of skin

<b>60200796</b>	7 oz/198 g
\$30.00 retail	\$22.50 wholesale   16 PV



dōTERRA®

**CPTG** Certified Pure Tested Grade®

Except as indicated, all words with trademark or registered trademark symbols are trademark or registered trademarks of dōTERRA Holdings, LLC.

Canada Product Guide

© 2019 dōTERRA Holdings, LLC, 389 South 1300 West, Pleasant Grove, UT 84062 USA • [dotterra.com/CA/en](https://dotterra.com/CA/en)

v4      Made in USA      60208870

